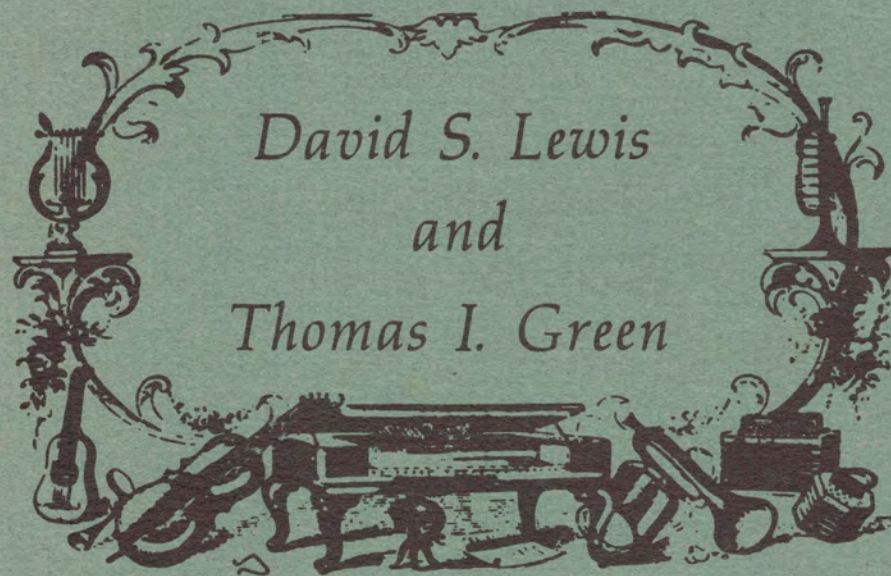


*HARMONIC
DICTATION*



Second Edition

HARMONIC DICTATION

Second edition

DAVID S. LEWIS

and

THOMAS I. GREEN

Published by the authors

Copyright 1978 by David S. Lewis and Thomas I. Green

Purchasers of this text are authorized to photocopy additional copies of worksheets for their own exclusive use. All other rights reserved. No part of this book may be reproduced in any form or by any means for any other use without permission in writing from the publishers.

PREFACE

Harmonic Dictation has been designed to assist in the recognition of chord sonorities and progressions by providing material for individual drill. The text consists of seventy-nine lessons which are to be completed with the use of the corresponding series of tape recordings. Each lesson provides drill on one aspect of harmonic dictation. It is not recommended that this text be utilized in lieu of teacher-assisted instruction. The purpose of Harmonic Dictation is to provide the necessary drill in a format which can be used by the student in or out of class, individually or in groups, to the extent necessary to develop listening skills.

TO THE STUDENT

To gain the greatest benefit from the lessons in this text, follow these instructions:

1. Most of the exercises are programmed; that is, the correct answers are found next to each exercise. In each lesson, cover the answer column with a shield. When the tape begins, complete each exercise by writing your answer in the space provided. Move the shield to expose the correct answer and compare it with your response. If your answer is incorrect, place an "X" by the exercise. If an exercise is played more than once, leave the correct answer covered until after the last playing. Feel free to change your response at any time before uncovering the printed answer. It is important to respond before looking at the printed answer. The commitment required in making a written response is more significant than that for one which is not written but merely thought out. Once you have committed yourself to a written response, you will not be able to change your mind after looking at the correct answer. A record of errors will help you and your instructor to determine your weak areas, plan further drills, and record your improvement.

2. Drills involving longer exercises are not programmed. The answers for these exercises are in the back of the text. After completing each exercise, consult the answer sheet to compare your written response with the correct answer. Be careful not to peek at the next exercise. Your shield will be helpful here.

GENERAL INSTRUCTIONS

There are several exercise formats in this text. Specific instructions for each lesson will be found on the recording where necessary. General instructions for each format are found here.

1. **INTERVAL IDENTIFICATION:** Each interval is played three times; the first is harmonic, the second is melodic ascending, and the third is harmonic. There are two series of worksheets. In Series 1, the size of the interval (and, in later exercises, the quality) is to be identified. In Series 2, the lower pitch of the interval is given, and the upper note is to be identified.
2. **SONORITY IDENTIFICATION:** The sonority (and, where required, the inversion) of each chord is to be identified. It is not necessary to identify inversions of diminished and augmented triads or half diminished and fully diminished seventh chords.
3. **COMPLETION:** Each exercise consists of a progression, usually five chords in length, which is notated with Roman numerals and figured bass. One, two, or three chords are missing from the printed exercises and are to be supplied in the spaces provided.
4. **MULTIPLE CHOICE:** Each exercise consists of a progression, usually five chords in length, which is notated with Roman numeral and figured bass symbols. There are two or more choices given for one of the chords. The correct chord is to be selected from the choices.
5. **ERROR DETECTION:** Each exercise consists of a progression, usually five chords in length, which is notated with Roman numeral and figured bass symbols. One of the chords has an incorrect symbol. The incorrect symbol is to be lined out and the correct symbol placed beneath it. (In Unit 8, Lesson 5, there may be more than one incorrect symbol.)
6. **FULL PHRASE ERROR DETECTION:** Each exercise consists of a phrase approximately seven chords in length. Notation of the outer voices and Roman numeral-figured bass analysis are provided. There are from two to six errors per exercise. Errors may be found in the pitches or in the Roman numeral-figured bass analysis. To correct pitch errors, cross out the incorrect pitch and write the correct pitch next to it. To correct the analysis, cross out the incorrect symbol and write the correct one beneath it. On the answer sheet, only the correctly written exercise is provided. However, all corrections have been circled.
7. **FULL PHRASE DICTATION:** The outer voices and Roman numeral-figured bass analysis are to be supplied for a phrase from five to eleven chords in length. In the earlier exercises, some of this information is provided.

TABLE OF CHORD SYMBOLS

1. Sonority identification exercises

| <u>Triads</u> | <u>Symbol</u> | <u>Seventh chords</u> | <u>Symbol</u> | <u>Inversion</u> | <u>Triad</u> | <u>Seventh chord</u> |
|---------------|---------------|-----------------------|---------------|--|--------------------------------------|--------------------------------------|
| Major | M | Dominant | V | Root position | (no symbol) | 7 |
| Minor | m | Minor | m | First inversion | 6 | $\begin{matrix} 6 \\ 5 \end{matrix}$ |
| Diminished | o | Major | M | Second inversion | $\begin{matrix} 6 \\ 4 \end{matrix}$ | $\begin{matrix} 4 \\ 3 \end{matrix}$ |
| Augmented | + | Half diminished | ♯ | Third inversion | --- | $\begin{matrix} 4 \\ 2 \end{matrix}$ |
| | | Fully diminished | o | NOTE: Identification of inversions is not required in sonority identification exercises for diminished and augmented triads or for half diminished or fully diminished seventh chords. | | |

2. Exercises with chord progressions

Roman numerals are used to indicate the root of the chord.
 Figured bass is used to indicate the inversion.
 Sonority is indicated by the following:

| <u>Sonority</u> | <u>Description</u> | <u>Example</u> |
|---|----------------------------|--|
| Major triad, Major seventh chord | Upper case | I, IV7 |
| Minor triad, Minor seventh chord | Lower case | vi, ii $\begin{matrix} 6 \\ 5 \end{matrix}$ |
| Diminished triad, Fully diminished seventh chord* | Lower case with o | ii $\begin{matrix} 0 \\ 6 \end{matrix}$, vii $\begin{matrix} 0 \\ 6 \end{matrix}$ |
| Augmented triad | Upper case with + | III ⁺ |
| Dominant seventh chord* | Upper case V | V7 |
| Half diminished seventh chord* | Lower case with ♯ | vii $\begin{matrix} \sharp \\ 6 \\ 5 \end{matrix}$ |
| Augmented sixth chords (The Italian Sixth is not utilized) | Abbreviation of chord type | Gr $\begin{matrix} 6 \\ 5 \end{matrix}$, Fr $\begin{matrix} 6 \\ 4 \\ 3 \end{matrix}$ |
| Neapolitan sixth chord | N | N6 |

*Secondary dominants are indicated by the use of V, followed by a slash, followed by the symbol of the chord that the secondary dominant would normally resolve to, e.g., V/ii, V $\begin{matrix} 6 \\ 5 \end{matrix}$ /IV. Secondary diminished seventh chords are indicated by use of the half diminished or fully diminished symbol followed by a 7, regardless of the inversion; e.g., a vii $\begin{matrix} \sharp \\ 6 \\ 5 \end{matrix}$ /V would be written as ♯7.

TABLE OF CONTENTS

UNIT I: Intervals

SERIES 1: The size (or, in later lessons, the size and quality) of intervals is to be identified.

SERIES 2: Staff notation is provided for the lower pitch of each interval, and the upper pitch is to be written.

Both series are used with the same set of recordings; i.e., the worksheets for Series 1, Lesson 1, and Series 2, Lesson 1, are used with the recording for Lesson 1. The lessons in this unit may be taken in any order.

| <u>Lesson</u> | <u>Intervals</u> | <u>Worksheet Page</u> | |
|---------------|--|-----------------------|-----------------|
| | | <u>Series 1</u> | <u>Series 2</u> |
| | In Series 1, Lessons 1-6, the size of the interval (2nd, 3rd, etc.) is to be identified without regard to quality (major, minor, etc.) | | |
| 1 | fourth, fifth, octave | 1 | 7 |
| 2 | fourth, fifth, tritone | 1 | 8 |
| 3 | third, sixth | 1 | no worksheet |
| 4 | third, sixth, fourth, fifth, tritone, octave | 2 | no worksheet |
| 5 | second, seventh | 2 | no worksheet |
| 6 | all intervals within the octave | 2 | no worksheet |
| | In Series 1, Lessons 7-14, the size and quality of the intervals are to be identified. | | |
| 7 | Major third, minor third | 3 | 9 |
| 8 | Major sixth, minor sixth | 3 | 10 |
| 9 | Major and minor thirds and sixths; Perfect fourth, fifth, and octave; tritone | 4 | 11 |
| 10 | Major second, minor second | 4 | 12 |
| 11 | Major seventh, minor seventh | 5 | 13 |
| 12 | Major and minor seconds and sevenths; Perfect fourth, fifth, and octave; tritone | 5 | 14 |
| 13 | All intervals within the octave | 6 | 15 |
| 14 | All intervals within the octave | 6 | 16 |

UNIT II: DIATONIC TRIADS

In this unit, all diatonic triads are introduced. Major and minor triads are in root position, and diminished triads are in first inversion.

Tonic, subdominant, and dominant triads

| | | |
|----------|--|----|
| LESSON 1 | | 17 |
| | I. 72 Sonority Identification of major and minor triads | |
| | II. 15 Completion: Fill in 2 chords in a 4-chord progression | |
| LESSON 2 | | 18 |
| | I. 15 Error Detection | |
| | II. 15 Completion: Fill in 3 chords in a 5-chord progression | |
| LESSON 3 | | 19 |
| | 6 Full phrase dictation | |

Subdominant, supertonic, and submediant triads

| | | |
|----------|---|----|
| LESSON 4 | | 20 |
| | I. 72 Sonority Identification of major, minor, augmented, and diminished triads | |
| | II. 15 Multiple choice: IV, ii, or vi | |
| LESSON 5 | | 21 |
| | I. 15 Error detection | |
| | II. 15 Completion: Fill in 3 chords in a 5-chord progression | |
| LESSON 6 | | 22 |
| | 6 Full-phrase dictation | |

Supertonic, submediant, leading tone, and mediant triads

| | | |
|----------|---|----|
| LESSON 7 | | 23 |
| | I. 10 Multiple choice: iii, vi, ii, or vii ^o 6 | |
| | II. 10 Error detection | |
| | III. 15 Completion: Fill in 3 chords in a 5-chord progression | |
| LESSON 8 | | 24 |
| | 6 Full phrase dictation | |

UNIT III: DIATONIC TRIADS IN INVERSIONS

First inversion

| | | |
|----------|---|----|
| LESSON 1 | | 25 |
| | I. 72 Identification of major and minor triad sonority and inversion (root position and first inversion only) | |
| | II. 15 Multiple choice: There are 2 choices for one of the chords in each exercise | |

| | | |
|----------|---|----|
| LESSON 2 | | 26 |
| | I. 15 Completion: Fill in 2 chords in a 5-chord progression | |
| | II. 2 Full phrase error detection | |
| | III. 2 Full phrase dictation | |
| LESSON 3 | | 27 |
| | I. 15 Completion: Fill in 3 chords in a 5-chord progression | |
| | II. 2 Full phrase error detection | |
| | III. 2 Full phrase dictation | |
| LESSON 4 | | 28 |
| | I. 2 Full phrase error detection | |
| | II. 3 Full phrase dictation | |

Second inversion

| | | |
|----------|--|----|
| LESSON 5 | | 29 |
| | I. 72 Identification of major and minor triad sonority and inversion (root position, first inversion, and second inversion). | |
| | II. 15 Multiple choice: There are two choices for one of the chords in each exercise. | |
| LESSON 6 | | 30 |
| | I. 15 Completion: Fill in 2 chords in a 5-chord progression | |
| | II. 2 Full phrase error detection | |
| | III. 2 Full phrase dictation | |
| LESSON 7 | | 31 |
| | I. 15 Completion: Fill in 3 chords in a 5-chord progression | |
| | II. 2 Full phrase error detection | |
| | III. 2 Full phrase dictation | |
| LESSON 8 | | 32 |
| | I. 2 Full phrase error detection | |
| | II. 3 Full phrase dictation | |

UNIT IV: REVIEW OF TRIADS

| | | |
|----------|---|----|
| LESSON 1 | | 33 |
| | I. 72 Sonority identification of major, minor, augmented, and diminished triads | |
| | II. 15 Completion: Fill in 2 chords in a 5-chord progression | |
| LESSON 2 | | 34 |
| | I. 72 Identification of major, minor, augmented, and diminished triad sonority; identification of inversions of major and minor triads. | |
| | II. 15 Completion: Fill in 2 chords in a 5-chord progression | |
| LESSON 3 | | 35 |
| | I. 15 Error detection | |
| | II. 25 Completion: Fill in 2 chords in a 5-chord progression | |

| | | |
|----------|--|----|
| | | x |
| LESSON 4 | | 36 |
| | I. 15 Error detection | |
| | II. 25 Completion: Fill in 2 chords in a 5-chord progression | |
| LESSON 5 | | 37 |
| | I. 25 Completion: Fill in 3 chords in a 5-chord progression | |
| | II. 4 Full phrase dictation | |
| LESSON 6 | Same format as Lesson 5 | 38 |
| LESSON 7 | | 39 |
| | I. 2 Full phrase error detection | |
| | II. 3 Full phrase dictation | |
| LESSON 8 | Same format as Lesson 7 | 40 |

UNIT V: SEVENTH CHORDS

Dominant seventh and minor seventh chords in root position

| | | |
|----------|--|----|
| LESSON 1 | | 41 |
| | I. 48 Sonority identification of dominant and minor seventh chords | |
| | II. 15 Multiple choice--major keys: V7, ii7, vi7, iii7 | |
| | III. 10 Multiple choice--minor keys: V7, i7, iv7 | |

Dominant seventh and minor seventh chords in root position and inversions

| | | |
|----------|---|----|
| LESSON 2 | | 42 |
| | I. 48 Identification of dominant and minor seventh sonorities in root position and inversions | |
| | II. 15 Multiple choice--major keys: V7, ii7, vi7, iii7 in root position and inversions | |
| | III. 10 Multiple choice--minor keys: V7, i7, iv7 in root position and inversions | |
| LESSON 3 | | 43 |
| | I. 25 Completion: Fill in 2 chords in a 5-chord progression | |
| | II. 4 Full phrase dictation | |

Half diminished and fully diminished seventh chords

| | | |
|----------|--|----|
| LESSON 4 | | 44 |
| | I. 48 Identification of dominant and minor seventh sonorities in root position and inversions and half diminished and fully diminished seventh sonorities in root position | |
| | II. 15 Completion: Fill in 1 chord in a 4-chord progression; minor keys--emphasis is on ii ^o 7 and vii ^o 7 | |
| | III. 10 Completion: Fill in 1 chord in a 4-chord progression; major keys--emphasis is on vii ^o 7 | |
| LESSON 5 | | 45 |
| | I. 25 Completion: Fill in 2 chords in a 5-chord progression | |
| | II. 4 Full phrase dictation | |

Major seventh chords

| | | |
|-----------|---|----|
| LESSON 6 | | 46 |
| | I. 48 Identification of major, minor, and dominant seventh sonorities in root position and inversions, and half diminished and fully diminished seventh sonorities in root position | |
| | II. 15 Completion: Fill in one chord in a 4-chord progression; major keys--emphasis is on I7 and IV7 | |
| | III. 10 Completion: Fill in one chord in a 4-chord progression; minor keys--emphasis is on VI7 and III7 | |
| LESSON 7 | | 47 |
| | I. 10 Error detection | |
| | II. 15 Completion: Fill in 2 chords in a 5-chord progression | |
| | III. 4 Full phrase dictation | |
| | <u>Review of all diatonic seventh chords</u> | |
| LESSON 8 | | 48 |
| | I. 25 Completion: Fill in 3 chords in a 5-chord progression | |
| | II. 2 Full phrase dictation | |
| LESSON 9 | | 49 |
| | I. 2 Full phrase error detection | |
| | II. 3 Full phrase dictation | |
| LESSON 10 | Same format as Lesson 9 | 50 |
| LESSON 11 | Same format as Lesson 9 | 51 |

UNIT VI: MODULATION

In this unit, all of the exercises contain common-chord modulations to closely related keys. The only chords used in Unit VI are diatonic triads and seventh chords. NOTE: There are no modulating exercises in Units VII, VIII, and in lessons 1-6 of Unit IX; therefore, Unit VI may be studied at any time after Unit V is completed.

| | | |
|----------|--|----|
| LESSON 1 | | 52 |
| | 12 Identification of modulation. Each exercise consists of a phrase which is seven chords in length. The phrase begins in one key and ends in a closely related key. The first key is given; the second key is to be identified. | |
| LESSON 2 | | 52 |
| | 4 Full-phrase dictation | |
| LESSON 3 | Same format as Lesson 2 | 53 |
| LESSON 4 | Same format as Lesson 2 | 54 |
| LESSON 5 | Same format as Lesson 2 | 55 |

UNIT VII: SECONDARY DOMINANT AND DIMINISHED SEVENTH CHORDS

Dominant of the dominant

LESSON 1

56

- I. 15 Multiple choice: V7/V or ii7
- II. 10 Completion: Fill in 2 chords in a 7-chord progression
- III. 2 Full phrase dictation

Dominant of the subdominant, dominant of the supertonic

LESSON 2

57

- I. 4 Multiple choice: V/IV or I7
- 4 Completion: Fill in 2 chords in a 5-chord progression; the only secondary dominant used is the V/IV
- 4 Multiple choice: V/ii or vi
- 4 Completion: Fill in 2 chords in a 5-chord progression; the only secondary dominant used is the V/ii
- II. 12 Completion: Fill in 1 chord in a 5-chord progression
- III. 1 Full phrase dictation

Dominant of the submediant, dominant of the mediant

LESSON 3

58

- I. 4 Multiple choice: V/vi or iii
- 4 Completion: Fill in 2 chords in a 5-chord progression; the only secondary dominant used is the V/vi
- 4 Multiple choice: V/iii or vi; V/III or VII
- 4 Completion: Fill in 2 chords in a 5-chord progression; the only secondary dominant used is the V/iii
- II. 12 Completion: Fill in 1 chord in a 5-chord progression
- III. 1 Full phrase dictation

All secondary dominants

LESSON 4

59

- I. 15 Completion: Fill in 2 chords in a 7-chord progression
- II. 2 Full phrase dictation

LESSON 5 Same format as Lesson 4

60

Secondary diminished seventh chords

LESSON 6

61

- I. 15 Multiple choice: Secondary dominant or secondary diminished seventh of the following chord, or a given diatonic chord
- II. 15 Completion: Fill in 2 chords in a 7-chord progression

LESSON 7

62

- I. 15 Completion: Fill in 3 chords in a 7-chord progression
- II. 2 Full phrase dictation

Review of secondary dominant and diminished seventh chords

| | | |
|----------|----------------------------------|----|
| LESSON 8 | | 63 |
| | I. 2 Full phrase error detection | |
| | II. 3 Full phrase dictation | |
| LESSON 9 | Same format as lesson 8 | 64 |

UNIT VIII: BORROWED CHORDS

All exercises in this unit are in the major mode and utilize sonorities borrowed from the parallel minor. Lessons 1-3 do not contain secondary dominants.

Borrowed ii^o, iv

| | | |
|----------|--|----|
| LESSON 1 | | 65 |
| | I. 4 Multiple choice: ii ⁶ , ii ^{o6} , ii ⁶ ₅ , ii ⁶ ₅ | |
| | 4 Multiple choice: IV, iv, IV ⁶ , iv ⁶ | |
| | 5 Multiple choice: All of the above | |
| | II. 15 Completion: Fill in 2 chords in a 5-chord progression | |
| | III. 1 Full phrase dictation | |

Borrowed VI, III, vii^o

| | | |
|----------|--|----|
| LESSON 2 | | 66 |
| | I. 4 Multiple choice: vi, VI | |
| | 4 Multiple choice: iii, III | |
| | 5 Multiple choice: vi, VI, iii, III | |
| | II. 15 Completion: Fill in 2 chords in a 5-chord progression | |
| | III. 1 Full phrase dictation | |

All borrowed chords

| | | |
|----------|--|----|
| LESSON 3 | | 67 |
| | I. 2 Full phrase error detection | |
| | II. 3 Full phrase dictation | |
| LESSON 4 | | 68 |
| | I. 20 Completion: Fill in 2 chords in a 5-chord progression | |
| | II. 2 Full phrase dictation | |
| LESSON 5 | | 69 |
| | I. 10 Error detection: As many as 3 chord symbols per exercise may need correction | |
| | II. 20 Completion: Fill in 3 chords in a 5-chord progression | |
| LESSON 6 | | 70 |
| | I. 2 Full phrase error detection | |
| | II. 3 Full phrase dictation | |
| LESSON 7 | Same format as Lesson 6 | 71 |
| LESSON 8 | Some format as Lesson 6 | 72 |

UNIT IX: AUGMENTED SIXTH AND NEAPOLITAN SIXTH CHORDS

Augmented sixth chords

- LESSON 1 73
- I. 4 Multiple choice: $iv^{\#6}$, $ii^{\#4}_3$, $Gr^{\#}_5$
 4 Multiple choice: VI , $ii^{\#4}_3$, $Fr^{\#}_4$
 10 Multiple choice: $Gr^{\#}_5$, $Fr^{\#}_4$
- II. 10 Completion: Fill in 2 chords in a 5-chord progression
 III. 2 Full phrase dictation

Neapolitan sixth chord

- LESSON 2 74
- I. 4 Multiple choice: $ii^{\#6}_5$, $vi^{\#4}_3$, $N6$
 II. 15 Multiple choice: $Gr^{\#}_5$, $Fr^{\#}_4$, $N6$
 III. 1 Full phrase dictation

Augmented sixth and Neapolitan sixth chords

- LESSON 3 75
- I. 20 Completion: Fill in 2 chords in a 5-chord progression
 II. 2 Full phrase dictation
- LESSON 4 Same format as Lesson 3 76

Review of all chords studied

- LESSON 5 77
- 4 Full phrase dictation
- LESSON 6 Same format as Lesson 5 78

Review of all chords studied and modulation

- LESSON 7 79
- 4 Full phrase dictation
- LESSON 8 Same format as Lesson 7 80

| LESSON 1 | | | | LESSON 2 | | | | LESSON 3 | | | |
|----------|-----|------|-----|----------|-----|------|-----|----------|-----|------|-----|
| ANS. | | ANS. | | ANS. | | ANS. | | ANS. | | ANS. | |
| 4 | 1. | 5 | 26. | 4 | 1. | 4 | 26. | 3 | 1. | 3 | 26. |
| 5 | 2. | 5 | 27. | 5 | 2. | 4 | 27. | 6 | 2. | 6 | 27. |
| 5 | 3. | 4 | 28. | T | 3. | T | 28. | 6 | 3. | 3 | 28. |
| 4 | 4. | 4 | 29. | T | 4. | 5 | 29. | 3 | 4. | 6 | 29. |
| 4 | 5. | 4 | 30. | 4 | 5. | T | 30. | 6 | 5. | 6 | 30. |
| 8 | 6. | 4 | 31. | 5 | 6. | 5 | 31. | 3 | 6. | 6 | 31. |
| 4 | 7. | 5 | 32. | T | 7. | 5 | 32. | 3 | 7. | 3 | 32. |
| 5 | 8. | 4 | 33. | 4 | 8. | T | 33. | 6 | 8. | 6 | 33. |
| 5 | 9. | 5 | 34. | T | 9. | T | 34. | 3 | 9. | 3 | 34. |
| 4 | 10. | 5 | 35. | 5 | 10. | 4 | 35. | 6 | 10. | 6 | 35. |
| 5 | 11. | 4 | 36. | 5 | 11. | 5 | 36. | 6 | 11. | 3 | 36. |
| 4 | 12. | 5 | 37. | T | 12. | T | 37. | 6 | 12. | 3 | 37. |
| 8 | 13. | 4 | 38. | 4 | 13. | 4 | 38. | 3 | 13. | 6 | 38. |
| 5 | 14. | 5 | 39. | 5 | 14. | 5 | 39. | 6 | 14. | 6 | 39. |
| 4 | 15. | 8 | 40. | 4 | 15. | 4 | 40. | 3 | 15. | 3 | 40. |
| 5 | 16. | 5 | 41. | T | 16. | 4 | 41. | 6 | 16. | 3 | 41. |
| 5 | 17. | 4 | 42. | 5 | 17. | 4 | 42. | 6 | 17. | 6 | 42. |
| 4 | 18. | 5 | 43. | T | 18. | T | 43. | 3 | 18. | 6 | 43. |
| 5 | 19. | 4 | 44. | T | 19. | 5 | 44. | 3 | 19. | 3 | 44. |
| 4 | 20. | 5 | 45. | 4 | 20. | 4 | 45. | 3 | 20. | 6 | 45. |
| 8 | 21. | 4 | 46. | T | 21. | 5 | 46. | 3 | 21. | 3 | 46. |
| 5 | 22. | 5 | 47. | 4 | 22. | T | 47. | 6 | 22. | 6 | 47. |
| 4 | 23. | 8 | 48. | T | 23. | 5 | 48. | 3 | 23. | 6 | 48. |
| 5 | 24. | 4 | 49. | 5 | 24. | 4 | 49. | 6 | 24. | 3 | 49. |
| 4 | 25. | 4 | 50. | 5 | 25. | T | 50. | 3 | 25. | 3 | 50. |

UNIT I, Series 1

| LESSON 4 | | | | LESSON 5 | | | | LESSON 6 | | | |
|----------|-----|------|-----|----------|-----|------|-----|----------|-----|------|-----|
| ANS. | | ANS. | | ANS. | | ANS. | | ANS. | | ANS. | |
| 4 | 1. | 4 | 26. | 2 | 1. | 7 | 26. | 6 | 1. | 7 | 26. |
| 6 | 2. | 6 | 27. | 2 | 2. | 2 | 27. | 4 | 2. | 2 | 27. |
| 3 | 3. | 5 | 28. | 7 | 3. | 7 | 28. | 2 | 3. | 7 | 28. |
| 5 | 4. | 6 | 29. | 2 | 4. | 7 | 29. | 7 | 4. | 3 | 29. |
| 4 | 5. | 3 | 30. | 7 | 5. | 2 | 30. | 3 | 5. | T | 30. |
| 6 | 6. | 6 | 31. | 7 | 6. | 2 | 31. | 8 | 6. | 3 | 31. |
| 3 | 7. | 4 | 32. | 2 | 7. | 7 | 32. | T | 7. | 5 | 32. |
| T | 8. | 5 | 33. | 2 | 8. | 7 | 33. | 2 | 8. | 6 | 33. |
| 8 | 9. | 3 | 34. | 7 | 9. | 2 | 34. | 5 | 9. | 7 | 34. |
| T | 10. | T | 35. | 2 | 10. | 2 | 35. | T | 10. | 4 | 35. |
| 5 | 11. | 3 | 36. | 2 | 11. | 7 | 36. | T | 11. | 3 | 36. |
| 4 | 12. | 6 | 37. | 2 | 12. | 2 | 37. | 3 | 12. | T | 37. |
| 6 | 13. | T | 38. | 7 | 13. | 7 | 38. | 7 | 13. | 2 | 38. |
| T | 14. | 4 | 39. | 7 | 14. | 2 | 39. | 5 | 14. | 2 | 39. |
| 3 | 15. | 5 | 40. | 7 | 15. | 7 | 40. | 8 | 15. | 6 | 40. |
| 6 | 16. | T | 41. | 2 | 16. | 2 | 41. | 2 | 16. | 5 | 41. |
| 5 | 17. | 3 | 42. | 7 | 17. | 7 | 42. | 4 | 17. | 2 | 42. |
| T | 18. | 4 | 43. | 2 | 18. | 7 | 43. | 7 | 18. | T | 43. |
| 3 | 19. | 6 | 44. | 2 | 19. | 2 | 44. | 3 | 19. | 7 | 44. |
| 8 | 20. | 5 | 45. | 7 | 20. | 7 | 45. | 6 | 20. | 3 | 45. |
| 3 | 21. | 5 | 46. | 7 | 21. | 2 | 46. | 3 | 21. | 6 | 46. |
| T | 22. | 4 | 47. | 7 | 22. | 2 | 47. | 4 | 22. | 8 | 47. |
| T | 23. | 3 | 48. | 2 | 23. | 2 | 48. | 6 | 23. | 4 | 48. |
| 4 | 24. | 8 | 49. | 7 | 24. | 7 | 49. | 3 | 24. | 2 | 49. |
| 5 | 25. | 6 | 50. | 2 | 25. | 7 | 50. | 5 | 25. | 6 | 50. |

| LESSON 7 | | | |
|----------|-----|------|-----|
| ANS. | | ANS. | |
| M3 | 1. | M3 | 26. |
| M3 | 2. | m3 | 27. |
| m3 | 3. | M3 | 28. |
| m3 | 4. | m3 | 29. |
| M3 | 5. | m3 | 30. |
| m3 | 6. | M3 | 31. |
| M3 | 7. | m3 | 32. |
| m3 | 8. | M3 | 33. |
| M3 | 9. | m3 | 34. |
| m3 | 10. | m3 | 35. |
| M3 | 11. | M3 | 36. |
| m3 | 12. | m3 | 37. |
| M3 | 13. | M3 | 38. |
| m3 | 14. | M3 | 39. |
| M3 | 15. | m3 | 40. |
| m3 | 16. | M3 | 41. |
| m3 | 17. | m3 | 42. |
| M3 | 18. | m3 | 43. |
| m3 | 19. | M3 | 44. |
| M3 | 20. | m3 | 45. |
| M3 | 21. | M3 | 46. |
| M3 | 22. | M3 | 47. |
| M3 | 23. | m3 | 48. |
| m3 | 24. | m3 | 49. |
| m3 | 25. | M3 | 50. |

| LESSON 8 | | | |
|----------|-----|------|-----|
| ANS. | | ANS. | |
| M6 | 1. | m6 | 26. |
| m6 | 2. | M6 | 27. |
| m6 | 3. | M6 | 28. |
| M6 | 4. | M6 | 29. |
| m6 | 5. | m6 | 30. |
| M6 | 6. | m6 | 31. |
| M6 | 7. | M6 | 32. |
| m6 | 8. | m6 | 33. |
| M6 | 9. | M6 | 34. |
| m6 | 10. | m6 | 35. |
| m6 | 11. | M6 | 36. |
| m6 | 12. | M6 | 37. |
| M6 | 13. | m6 | 38. |
| m6 | 14. | m6 | 39. |
| M6 | 15. | M6 | 40. |
| M6 | 16. | M6 | 41. |
| m6 | 17. | M6 | 42. |
| M6 | 18. | m6 | 43. |
| M6 | 19. | m6 | 44. |
| m6 | 20. | M6 | 45. |
| M6 | 21. | m6 | 46. |
| m6 | 22. | m6 | 47. |
| m6 | 23. | M6 | 48. |
| m6 | 24. | m6 | 49. |
| M6 | 25. | M6 | 50. |

UNIT I, Series 1

| LESSON 9 | | | |
|----------|-----|------|-----|
| ANS. | | ANS. | |
| P4 | 1. | m3 | 26. |
| M3 | 2. | m6 | 27. |
| M6 | 3. | P4 | 28. |
| P5 | 4. | P8 | 29. |
| m3 | 5. | P5 | 30. |
| m6 | 6. | m3 | 31. |
| T | 7. | P8 | 32. |
| m6 | 8. | P4 | 33. |
| P8 | 9. | P5 | 34. |
| M6 | 10. | T | 35. |
| T | 11. | M6 | 36. |
| m3 | 12. | M3 | 37. |
| P5 | 13. | m3 | 38. |
| M3 | 14. | P5 | 39. |
| P4 | 15. | m6 | 40. |
| P5 | 16. | M6 | 41. |
| M6 | 17. | T | 42. |
| m3 | 18. | P5 | 43. |
| m6 | 19. | M3 | 44. |
| T | 20. | P4 | 45. |
| m6 | 21. | M6 | 46. |
| P4 | 22. | m6 | 47. |
| T | 23. | m3 | 48. |
| M6 | 24. | T | 49. |
| M3 | 25. | P4 | 50. |

| LESSON 10 | | | |
|-----------|-----|------|-----|
| ANS. | | ANS. | |
| M2 | 1. | M2 | 26. |
| m2 | 2. | m2 | 27. |
| M2 | 3. | m2 | 28. |
| m2 | 4. | m2 | 29. |
| m2 | 5. | M2 | 30. |
| M2 | 6. | m2 | 31. |
| m2 | 7. | M2 | 32. |
| m2 | 8. | M2 | 33. |
| M2 | 9. | m2 | 34. |
| M2 | 10. | M2 | 35. |
| M2 | 11. | M2 | 36. |
| m2 | 12. | m2 | 37. |
| m2 | 13. | M2 | 38. |
| M2 | 14. | m2 | 39. |
| M2 | 15. | m2 | 40. |
| m2 | 16. | m2 | 41. |
| M2 | 17. | M2 | 42. |
| m2 | 18. | m2 | 43. |
| M2 | 19. | M2 | 44. |
| m2 | 20. | M2 | 45. |
| m2 | 21. | m2 | 46. |
| M2 | 22. | M2 | 47. |
| M2 | 23. | m2 | 48. |
| M2 | 24. | m2 | 49. |
| m2 | 25. | M2 | 50. |

| LESSON 11 | | | |
|-----------|-----|------|-----|
| ANS. | | ANS. | |
| m7 | 1. | m7 | 26. |
| m7 | 2. | M7 | 27. |
| M7 | 3. | m7 | 28. |
| M7 | 4. | M7 | 29. |
| m7 | 5. | m7 | 30. |
| M7 | 6. | m7 | 31. |
| m7 | 7. | m7 | 32. |
| M7 | 8. | m7 | 33. |
| M7 | 9. | M7 | 34. |
| m7 | 10. | M7 | 35. |
| m7 | 11. | m7 | 36. |
| M7 | 12. | M7 | 37. |
| M7 | 13. | m7 | 38. |
| m7 | 14. | M7 | 39. |
| m7 | 15. | M7 | 40. |
| M7 | 16. | M7 | 41. |
| m7 | 17. | m7 | 42. |
| M7 | 18. | M7 | 43. |
| m7 | 19. | m7 | 44. |
| M7 | 20. | m7 | 45. |
| M7 | 21. | M7 | 46. |
| M7 | 22. | m7 | 47. |
| m7 | 23. | M7 | 48. |
| M7 | 24. | M7 | 49. |
| m7 | 25. | m7 | 50. |

| LESSON 12 | | | |
|-----------|-----|------|-----|
| ANS. | | ANS. | |
| P5 | 1. | M2 | 26. |
| T | 2. | M7 | 27. |
| m2 | 3. | T | 28. |
| m7 | 4. | P5 | 29. |
| M7 | 5. | m7 | 30. |
| P8 | 6. | T | 31. |
| M2 | 7. | m7 | 32. |
| P4 | 8. | m2 | 33. |
| T | 9. | M7 | 34. |
| M7 | 10. | P4 | 35. |
| m7 | 11. | P5 | 36. |
| P4 | 12. | M2 | 37. |
| m2 | 13. | P4 | 38. |
| M2 | 14. | m2 | 39. |
| M7 | 15. | T | 40. |
| T | 16. | M7 | 41. |
| P8 | 17. | M2 | 42. |
| P5 | 18. | m7 | 43. |
| M2 | 19. | T | 44. |
| m2 | 20. | P8 | 45. |
| P4 | 21. | m2 | 46. |
| M2 | 22. | P4 | 47. |
| P5 | 23. | M7 | 48. |
| m7 | 24. | M2 | 49. |
| m2 | 25. | P5 | 50. |

UNIT I, Series 1

| LESSON 13 | | | |
|-----------|-----|------|-----|
| ANS. | | ANS. | |
| M3 | 1. | M6 | 26. |
| P4 | 2. | m7 | 27. |
| M6 | 3. | m3 | 28. |
| m7 | 4. | T | 29. |
| m3 | 5. | M2 | 30. |
| P5 | 6. | M7 | 31. |
| m2 | 7. | m7 | 32. |
| M2 | 8. | T | 33. |
| m6 | 9. | P4 | 34. |
| M7 | 10. | M2 | 35. |
| m3 | 11. | M6 | 36. |
| P8 | 12. | P8 | 37. |
| P5 | 13. | m3 | 38. |
| T | 14. | P5 | 39. |
| m6 | 15. | m2 | 40. |
| M7 | 16. | M3 | 41. |
| P4 | 17. | m6 | 42. |
| M6 | 18. | T | 43. |
| m6 | 19. | P8 | 44. |
| m2 | 20. | m3 | 45. |
| P4 | 21. | m7 | 46. |
| m6 | 22. | m2 | 47. |
| m2 | 23. | M3 | 48. |
| M7 | 24. | M7 | 49. |
| M3 | 25. | M6 | 50. |

| LESSON 14 | | | |
|-----------|-----|------|-----|
| ANS. | | ANS. | |
| M2 | 1. | m3 | 26. |
| P4 | 2. | P8 | 27. |
| M3 | 3. | M2 | 28. |
| m3 | 4. | M6 | 29. |
| m6 | 5. | P5 | 30. |
| m2 | 6. | m7 | 31. |
| P4 | 7. | M6 | 32. |
| T | 8. | m2 | 33. |
| M7 | 9. | M2 | 34. |
| m7 | 10. | P4 | 35. |
| m6 | 11. | M3 | 36. |
| m7 | 12. | M7 | 37. |
| m3 | 13. | m6 | 38. |
| M2 | 14. | P5 | 39. |
| M7 | 15. | m3 | 40. |
| M3 | 16. | M2 | 41. |
| P5 | 17. | M6 | 42. |
| T | 18. | m6 | 43. |
| P8 | 19. | P5 | 44. |
| m3 | 20. | m7 | 45. |
| m2 | 21. | M6 | 46. |
| T | 22. | T | 47. |
| M3 | 23. | P8 | 48. |
| M7 | 24. | m2 | 49. |
| m6 | 25. | M3 | 50. |

LESSON 1

UNIT I, Series 2

1. 2. 3. 4. 5. 6. 7. 8. 9. 10.

A
N
S

11. 12. 13. 14. 15. 16. 17. 18. 19. 20.

A
N
S

21. 22. 23. 24. 25. 26. 27. 28. 29. 30.

A
N
S

31. 32. 33. 34. 35. 36. 37. 38. 39. 40.

A
N
S

41. 42. 43. 44. 45. 46. 47. 48. 49. 50.

A
N
S

UNIT I, Series 2

LESSON 2

1. 2. 3. 4. 5. 6. 7. 8. 9. 10.

ANS

Detailed description: This block contains exercises 1 through 10, all written in the treble clef. Each exercise is a single note on a five-line staff. The notes are: 1. B4, 2. Bb4, 3. C#5, 4. C5, 5. D5, 6. D5, 7. E5, 8. F#5, 9. F5, 10. G5. The 'ANS' label is on the left side of the first two staves.

11. 12. 13. 14. 15. 16. 17. 18. 19. 20.

ANS

Detailed description: This block contains exercises 11 through 20, all written in the bass clef. Each exercise is a single note on a five-line staff. The notes are: 11. G3, 12. A3, 13. Bb3, 14. Bb3, 15. C4, 16. C4, 17. D4, 18. D#4, 19. E4, 20. F4. The 'ANS' label is on the left side of the first two staves.

21. 22. 23. 24. 25. 26. 27. 28. 29. 30.

ANS

Detailed description: This block contains exercises 21 through 30, all written in the treble clef. Each exercise is a single note on a five-line staff. The notes are: 21. G4, 22. A4, 23. Bb4, 24. Bb4, 25. C5, 26. C5, 27. D5, 28. E5, 29. F#5, 30. F#5. The 'ANS' label is on the left side of the first two staves.

31. 32. 33. 34. 35. 36. 37. 38. 39. 40.

ANS

Detailed description: This block contains exercises 31 through 40, all written in the bass clef. Each exercise is a single note on a five-line staff. The notes are: 31. G3, 32. Ab3, 33. Ab3, 34. Bb3, 35. Bb3, 36. C4, 37. C4, 38. D4, 39. D4, 40. E4. The 'ANS' label is on the left side of the first two staves.

41. 42. 43. 44. 45. 46. 47. 48. 49. 50.

ANS

Detailed description: This block contains exercises 41 through 50, all written in the treble clef. Each exercise is a single note on a five-line staff. The notes are: 41. C#5, 42. C#5, 43. C#5, 44. D5, 45. D5, 46. E5, 47. E5, 48. F5, 49. F5, 50. G5. The 'ANS' label is on the left side of the first two staves.

LESSON 7

UNIT I, Series 2

1. 2. 3. 4. 5. 6. 7. 8. 9. 10.

Exercise 1: Treble clef, one flat, quarter note G4.
Exercise 2: Treble clef, one flat, quarter note A4.
Exercise 3: Treble clef, one flat, quarter note B4.
Exercise 4: Treble clef, one flat, quarter note C5.
Exercise 5: Treble clef, one flat, quarter note D5.
Exercise 6: Treble clef, one flat, quarter note E5.
Exercise 7: Treble clef, one flat, quarter note F5.
Exercise 8: Treble clef, one flat, quarter note G5.
Exercise 9: Treble clef, one flat, quarter note A5.
Exercise 10: Treble clef, one flat, quarter note B5.
ANS: Treble clef, chords for each exercise: 1. G4, Bb4; 2. A4, C5; 3. B4, D5; 4. C5, Eb5; 5. D5, F5; 6. E5, G5; 7. F5, Ab5; 8. G5, Bb5; 9. A5, C6; 10. B5, D6.

11. 12. 13. 14. 15. 16. 17. 18. 19. 20.

Exercise 11: Bass clef, one flat, quarter note G2.
Exercise 12: Bass clef, one flat, quarter note A2.
Exercise 13: Bass clef, one flat, quarter note B2.
Exercise 14: Bass clef, one flat, quarter note C3.
Exercise 15: Bass clef, one flat, quarter note D3.
Exercise 16: Bass clef, one flat, quarter note E3.
Exercise 17: Bass clef, one flat, quarter note F3.
Exercise 18: Bass clef, one flat, quarter note G3.
Exercise 19: Bass clef, one flat, quarter note A3.
Exercise 20: Bass clef, one flat, quarter note B3.
ANS: Bass clef, chords for each exercise: 11. G2, Bb2; 12. A2, C3; 13. B2, D3; 14. C3, Eb3; 15. D3, F3; 16. E3, G3; 17. F3, Ab3; 18. G3, Bb3; 19. A3, C4; 20. B3, D4.

21. 22. 23. 24. 25. 26. 27. 28. 29. 30.

Exercise 21: Treble clef, one flat, quarter note G4.
Exercise 22: Treble clef, one flat, quarter note A4.
Exercise 23: Treble clef, one flat, quarter note B4.
Exercise 24: Treble clef, one flat, quarter note C5.
Exercise 25: Treble clef, one flat, quarter note D5.
Exercise 26: Treble clef, one flat, quarter note E5.
Exercise 27: Treble clef, one flat, quarter note F5.
Exercise 28: Treble clef, one flat, quarter note G5.
Exercise 29: Treble clef, one flat, quarter note A5.
Exercise 30: Treble clef, one flat, quarter note B5.
ANS: Treble clef, chords for each exercise: 21. G4, Bb4; 22. A4, C5; 23. B4, D5; 24. C5, Eb5; 25. D5, F5; 26. E5, G5; 27. F5, Ab5; 28. G5, Bb5; 29. A5, C6; 30. B5, D6.

31. 32. 33. 34. 35. 36. 37. 38. 39. 40.

Exercise 31: Bass clef, one flat, quarter note G2.
Exercise 32: Bass clef, one flat, quarter note A2.
Exercise 33: Bass clef, one flat, quarter note B2.
Exercise 34: Bass clef, one flat, quarter note C3.
Exercise 35: Bass clef, one flat, quarter note D3.
Exercise 36: Bass clef, one flat, quarter note E3.
Exercise 37: Bass clef, one flat, quarter note F3.
Exercise 38: Bass clef, one flat, quarter note G3.
Exercise 39: Bass clef, one flat, quarter note A3.
Exercise 40: Bass clef, one flat, quarter note B3.
ANS: Bass clef, chords for each exercise: 31. G2, Bb2; 32. A2, C3; 33. B2, D3; 34. C3, Eb3; 35. D3, F3; 36. E3, G3; 37. F3, Ab3; 38. G3, Bb3; 39. A3, C4; 40. B3, D4.

41. 42. 43. 44. 45. 46. 47. 48. 49. 50.

Exercise 41: Treble clef, one flat, quarter note G4.
Exercise 42: Treble clef, one flat, quarter note A4.
Exercise 43: Treble clef, one flat, quarter note B4.
Exercise 44: Treble clef, one flat, quarter note C5.
Exercise 45: Treble clef, one flat, quarter note D5.
Exercise 46: Treble clef, one flat, quarter note E5.
Exercise 47: Treble clef, one flat, quarter note F5.
Exercise 48: Treble clef, one flat, quarter note G5.
Exercise 49: Treble clef, one flat, quarter note A5.
Exercise 50: Treble clef, one flat, quarter note B5.
ANS: Treble clef, chords for each exercise: 41. G4, Bb4; 42. A4, C5; 43. B4, D5; 44. C5, Eb5; 45. D5, F5; 46. E5, G5; 47. F5, Ab5; 48. G5, Bb5; 49. A5, C6; 50. B5, D6.

LESSON 8

1. 2. 3. 4. 5. 6. 7. 8. 9. 10.

A
N
S

11. 12. 13. 14. 15. 16. 17. 18. 19. 20.

A
N
S

21. 22. 23. 24. 25. 26. 27. 28. 29. 30.

A
N
S

31. 32. 33. 34. 35. 36. 37. 38. 39. 40.

A
N
S

41. 42. 43. 44. 45. 46. 47. 48. 49. 50.

A
N
S

LESSON 9

1. 2. 3. 4. 5. 6. 7. 8. 9. 10.

Musical notation for exercises 1-10, Treble Clef system. The staff contains ten measures of music. Each measure is divided into two parts: 'A' (top) and 'N' (bottom). The notes are as follows:

| Exercise | A | N |
|----------|----|----|
| 1. | C4 | C4 |
| 2. | D4 | D4 |
| 3. | E4 | E4 |
| 4. | F4 | F4 |
| 5. | G4 | G4 |
| 6. | A4 | A4 |
| 7. | B4 | B4 |
| 8. | C5 | C5 |
| 9. | D5 | D5 |
| 10. | E5 | E5 |

11. 12. 13. 14. 15. 16. 17. 18. 19. 20.

Musical notation for exercises 11-20, Bass Clef system. The staff contains ten measures of music. Each measure is divided into two parts: 'A' (top) and 'N' (bottom). The notes are as follows:

| Exercise | A | N |
|----------|----|----|
| 11. | F3 | F3 |
| 12. | G3 | G3 |
| 13. | A3 | A3 |
| 14. | B3 | B3 |
| 15. | C4 | C4 |
| 16. | D4 | D4 |
| 17. | E4 | E4 |
| 18. | F4 | F4 |
| 19. | G4 | G4 |
| 20. | A4 | A4 |

21. 22. 23. 24. 25. 26. 27. 28. 29. 30.

Musical notation for exercises 21-30, Treble Clef system. The staff contains ten measures of music. Each measure is divided into two parts: 'A' (top) and 'N' (bottom). The notes are as follows:

| Exercise | A | N |
|----------|----|----|
| 21. | C4 | C4 |
| 22. | D4 | D4 |
| 23. | E4 | E4 |
| 24. | F4 | F4 |
| 25. | G4 | G4 |
| 26. | A4 | A4 |
| 27. | B4 | B4 |
| 28. | C5 | C5 |
| 29. | D5 | D5 |
| 30. | E5 | E5 |

31. 32. 33. 34. 35. 36. 37. 38. 39. 40.

Musical notation for exercises 31-40, Bass Clef system. The staff contains ten measures of music. Each measure is divided into two parts: 'A' (top) and 'N' (bottom). The notes are as follows:

| Exercise | A | N |
|----------|----|----|
| 31. | F3 | F3 |
| 32. | G3 | G3 |
| 33. | A3 | A3 |
| 34. | B3 | B3 |
| 35. | C4 | C4 |
| 36. | D4 | D4 |
| 37. | E4 | E4 |
| 38. | F4 | F4 |
| 39. | G4 | G4 |
| 40. | A4 | A4 |

41. 42. 43. 44. 45. 46. 47. 48. 49. 50.

Musical notation for exercises 41-50, Treble Clef system. The staff contains ten measures of music. Each measure is divided into two parts: 'A' (top) and 'N' (bottom). The notes are as follows:

| Exercise | A | N |
|----------|----|----|
| 41. | C4 | C4 |
| 42. | D4 | D4 |
| 43. | E4 | E4 |
| 44. | F4 | F4 |
| 45. | G4 | G4 |
| 46. | A4 | A4 |
| 47. | B4 | B4 |
| 48. | C5 | C5 |
| 49. | D5 | D5 |
| 50. | E5 | E5 |

1. 2. 3. 4. 5. 6. 7. 8. 9. 10.

Handwritten musical notation for exercises 1 through 10 in the treble clef. Each exercise consists of a single eighth note on a different staff line, with its corresponding fingering (1-5) written below the note. The notes are: 1. G4 (1), 2. A4 (2), 3. B4 (3), 4. C5 (4), 5. D5 (5), 6. E5 (1), 7. F5 (2), 8. G5 (3), 9. A5 (4), 10. B5 (5).

A
N
S

11. 12. 13. 14. 15. 16. 17. 18. 19. 20.

Handwritten musical notation for exercises 11 through 20 in the bass clef. Each exercise consists of a single eighth note on a different staff line, with its corresponding fingering (1-5) written below the note. The notes are: 11. G3 (1), 12. F3 (2), 13. E3 (3), 14. D3 (4), 15. C3 (5), 16. B2 (1), 17. A2 (2), 18. G2 (3), 19. F2 (4), 20. E2 (5).

A
N
S

21. 22. 23. 24. 25. 26. 27. 28. 29. 30.

Handwritten musical notation for exercises 21 through 30 in the treble clef. Each exercise consists of a single eighth note on a different staff line, with its corresponding fingering (1-5) written below the note. The notes are: 21. G4 (1), 22. A4 (2), 23. B4 (3), 24. C5 (4), 25. D5 (5), 26. E5 (1), 27. F5 (2), 28. G5 (3), 29. A5 (4), 30. B5 (5).

A
N
S

31. 32. 33. 34. 35. 36. 37. 38. 39. 40.

Handwritten musical notation for exercises 31 through 40 in the bass clef. Each exercise consists of a single eighth note on a different staff line, with its corresponding fingering (1-5) written below the note. The notes are: 31. G3 (1), 32. F3 (2), 33. E3 (3), 34. D3 (4), 35. C3 (5), 36. B2 (1), 37. A2 (2), 38. G2 (3), 39. F2 (4), 40. E2 (5).

A
N
S

41. 42. 43. 44. 45. 46. 47. 48. 49. 50.

Handwritten musical notation for exercises 41 through 50 in the treble clef. Each exercise consists of a single eighth note on a different staff line, with its corresponding fingering (1-5) written below the note. The notes are: 41. G4 (1), 42. A4 (2), 43. B4 (3), 44. C5 (4), 45. D5 (5), 46. E5 (1), 47. F5 (2), 48. G5 (3), 49. A5 (4), 50. B5 (5).

A
N
S

LESSON 11

1. 2. 3. 4. 5. 6. 7. 8. 9. 10.

A
N
S

11. 12. 13. 14. 15. 16. 17. 18. 19. 20.

A
N
S

21. 22. 23. 24. 25. 26. 27. 28. 29. 30.

A
N
S

31. 32. 33. 34. 35. 36. 37. 38. 39. 40.

A
N
S

41. 42. 43. 44. 45. 46. 47. 48. 49. 50.

A
N
S

UNIT I, Series 2

LESSON 12

1. 2. 3. 4. 5. 6. 7. 8. 9. 10.

ANS

11. 12. 13. 14. 15. 16. 17. 18. 19. 20.

ANS

21. 22. 23. 24. 25. 26. 27. 28. 29. 30.

ANS

31. 32. 33. 34. 35. 36. 37. 38. 39. 40.

ANS

41. 42. 43. 44. 45. 46. 47. 48. 49. 50.

ANS

Detailed description: This page contains 50 numbered musical exercises for Lesson 12, arranged in five systems of two staves each. The first system (exercises 1-10) uses a Treble clef. The second system (exercises 11-20) uses a Bass clef. The third system (exercises 21-30) uses a Treble clef. The fourth system (exercises 31-40) uses a Bass clef. The fifth system (exercises 41-50) uses a Treble clef. Each exercise is a single-measure piece of music, often consisting of a single note or a simple chord. The notation includes various accidentals (sharps, flats, naturals) and stems. Vertical dashed lines separate the exercises. The letters 'A', 'N', and 'S' are printed vertically to the left of each system of staves.

LESSON 13

1. 2. 3. 4. 5. 6. 7. 8. 9. 10.

A
N
S

Detailed description: This block contains the first ten exercises of Lesson 13, numbered 1 through 10. Each exercise is presented on a two-staff system. The top staff uses a treble clef and contains a single eighth note. The bottom staff, labeled 'ANS', contains a chord of two notes. Vertical dashed lines separate the exercises. The notes and chords are as follows: 1. (F4), (F4, A4); 2. (G4), (G4, B4); 3. (A4), (A4, C5); 4. (B4), (B4, D5); 5. (C5), (C5, E5); 6. (D5), (D5, F5); 7. (E5), (E5, G5); 8. (F5), (F5, A5); 9. (G5), (G5, B5); 10. (A5), (A5, C6).

11. 12. 13. 14. 15. 16. 17. 18. 19. 20.

A
N
S

Detailed description: This block contains exercises 11 through 20, numbered 11 through 20. Each exercise is presented on a two-staff system. The top staff uses a bass clef and contains a single eighth note. The bottom staff, labeled 'ANS', contains a chord of two notes. Vertical dashed lines separate the exercises. The notes and chords are as follows: 11. (F3), (F3, A3); 12. (G3), (G3, B3); 13. (A3), (A3, C4); 14. (B3), (B3, D4); 15. (C4), (C4, E4); 16. (D4), (D4, F4); 17. (E4), (E4, G4); 18. (F4), (F4, A4); 19. (G4), (G4, B4); 20. (A4), (A4, C5).

21. 22. 23. 24. 25. 26. 27. 28. 29. 30.

A
N
S

Detailed description: This block contains exercises 21 through 30, numbered 21 through 30. Each exercise is presented on a two-staff system. The top staff uses a treble clef and contains a single eighth note. The bottom staff, labeled 'ANS', contains a chord of two notes. Vertical dashed lines separate the exercises. The notes and chords are as follows: 21. (F4), (F4, A4); 22. (G4), (G4, B4); 23. (A4), (A4, C5); 24. (B4), (B4, D5); 25. (C5), (C5, E5); 26. (D5), (D5, F5); 27. (E5), (E5, G5); 28. (F5), (F5, A5); 29. (G5), (G5, B5); 30. (A5), (A5, C6).

31. 32. 33. 34. 35. 36. 37. 38. 39. 40.

A
N
S

Detailed description: This block contains exercises 31 through 40, numbered 31 through 40. Each exercise is presented on a two-staff system. The top staff uses a bass clef and contains a single eighth note. The bottom staff, labeled 'ANS', contains a chord of two notes. Vertical dashed lines separate the exercises. The notes and chords are as follows: 31. (F3), (F3, A3); 32. (G3), (G3, B3); 33. (A3), (A3, C4); 34. (B3), (B3, D4); 35. (C4), (C4, E4); 36. (D4), (D4, F4); 37. (E4), (E4, G4); 38. (F4), (F4, A4); 39. (G4), (G4, B4); 40. (A4), (A4, C5).

41. 42. 43. 44. 45. 46. 47. 48. 49. 50.

A
N
S

Detailed description: This block contains the final ten exercises of Lesson 13, numbered 41 through 50. Each exercise is presented on a two-staff system. The top staff uses a treble clef and contains a single eighth note. The bottom staff, labeled 'ANS', contains a chord of two notes. Vertical dashed lines separate the exercises. The notes and chords are as follows: 41. (F4), (F4, A4); 42. (G4), (G4, B4); 43. (A4), (A4, C5); 44. (B4), (B4, D5); 45. (C5), (C5, E5); 46. (D5), (D5, F5); 47. (E5), (E5, G5); 48. (F5), (F5, A5); 49. (G5), (G5, B5); 50. (A5), (A5, C6).

UNIT I, Series 2

LESSON 14

1. 2. 3. 4. 5. 6. 7. 8. 9. 10.

A
N
S

11. 12. 13. 14. 15. 16. 17. 18. 19. 20.

A
N
S

21. 22. 23. 24. 25. 26. 27. 28. 29. 30.

A
N
S

31. 32. 33. 34. 35. 36. 37. 38. 39. 40.

A
N
S

41. 42. 43. 44. 45. 46. 47. 48. 49. 50.

A
N
S

Detailed description: This page contains 50 numbered musical exercises for Lesson 14, arranged in five groups of ten. Each exercise is presented on a two-staff system. The first staff of each system is in a specific clef (Treble or Bass), and the second staff is in the opposite clef. The exercises are: 1-10 (Treble clef), 11-20 (Bass clef), 21-30 (Treble clef), 31-40 (Bass clef), and 41-50 (Treble clef). Each exercise consists of a single note or a pair of notes, often with accidentals (sharps, flats, naturals) and stems. Vertical dashed lines separate the exercises. The page is labeled 'A N S' on the left side of each system, indicating that the exercises are for answer purposes.

LESSON 1

PART I: Identification of major & minor triad sonority

PART II: Completion

| ANS. | Closed pos. | ANS. | | ANS. | |
|------|-------------|------|-----------------------|------|-----|
| M | 1. | M | 25. | M | 49. |
| M | 2. | m | 26. | M | 50. |
| m | 3. | M | 27. | m | 51. |
| M | 4. | M | 28. | M | 52. |
| m | 5. | m | 29. | m | 53. |
| m | 6. | m | 30. | m | 54. |
| M | 7. | m | 31. | M | 55. |
| m | 8. | M | 32. | m | 56. |
| M | 9. | m | 33. | m | 57. |
| m | 10. | M | 34. | M | 58. |
| m | 11. | m | 35. | m | 59. |
| M | 12. | M | 36. | m | 60. |
| M | 13. | | Closed & open pos. | M | 61. |
| m | 14. | m | 37. | m | 62. |
| m | 15. | M | 38. | M | 63. |
| M | 16. | m | 39. | m | 64. |
| m | 17. | M | 40. | M | 65. |
| M | 18. | m | 41. | M | 66. |
| m | 19. | M | 42. | m | 67. |
| M | 20. | m | 43. | M | 68. |
| M | 21. | m | 44. | M | 69. |
| m | 22. | M | 45. | m | 70. |
| m | 23. | M | 46. | M | 71. |
| M | 24. | M | 47. | m | 72. |
| | | m | 48. | | |

| ANS. | Major Mode |
|-------|-------------------|
| IV V | 1. I _____ I |
| IV I | 2. I _____ V |
| IV IV | 3. I _____ I |
| V I | 4. I _____ V |
| V V | 5. I _____ I |
| | Minor Mode |
| V i | 6. i _____ V |
| i iv | 7. i _____ V |
| i i | 8. i _____ V |
| iv i | 9. i _____ V |
| iv V | 10. i _____ i |
| | Major Mode |
| V V | 11. I _____ I |
| IV V | 12. I _____ V |
| IV V | 13. I _____ I |
| I I | 14. I _____ V |
| V V | 15. I _____ I |

PART I: Error Detection

PART II: Completion

| ANSWERS | Major Mode |
|--|---|
| I I IV V I — I — — — | 1. I IV IV V I — — — — — |
| I IV I V I — — V — — — | 2. I IV I V I — — — — — |
| I V I IV V — — I — — — | 3. I V IV IV V — — — — — |
| I I I I V — — V — — — | 4. I I IV I V — — — — — |
| I IV I V I — — I — — — | 5. I IV V V I — — — — — |
| i iv i i V — — iv — — — | Minor Mode 6. i iv V i V — — — — — |
| i V i iv i — — i — — — | 7. i V V iv i — — — — — |
| i i V i V — — iv — — — | 8. i i V i V — — — — — |
| i V i i i — — — iv — — — | 9. i V i V i — — — — — |
| i i iv V i — — i — — — | 10. i iv iv V i — — — — — |
| I I I V I — — V — — — | Major Mode 11. I IV I V I — — — — — |
| I I I V I — — IV — — — | 12. I V I V I — — — — — |
| I I IV I V — — I — — — | 13. I IV IV I V — — — — — |
| I IV I I V — — — V — — — | 14. I IV I I V — — — — — |
| I IV I V I — — — V — — — | 15. I IV I V I — — — — — |

| ANSWERS | Major Mode |
|---------|---------------|
| IV I IV | 1. I _____ V |
| IV V V | 2. I _____ I |
| V I IV | 3. I _____ V |
| I IV I | 4. I _____ V |
| I IV V | 5. I _____ I |
| | Minor Mode |
| i iv i | 6. i _____ V |
| iv iv V | 7. i _____ i |
| iv i V | 8. i _____ i |
| V i iv | 9. i _____ V |
| V i iv | 10. i _____ i |
| | Major Mode |
| IV IV I | 11. I _____ V |
| V I I | 12. I _____ V |
| IV V I | 13. I _____ V |
| I V I | 14. I _____ V |
| IV V V | 15. I _____ I |

LESSON 3

1.

C: I — — — I

2.

c: i — — — V

3.

G: I — — — V

4.

g: i — — — i

5.

F: I — — — I

6.

f: i — — — V

LESSON 4

PART I: Identification of M, m, + & o triad sonority

PART II: Multiple Choice

| ANS. | Closed position | ANS. | | ANS. | |
|------|-----------------|------|---------------------------|------|-----|
| M | 1. | M | 26. | m | 49. |
| + | 2. | m | 27. | + | 50. |
| o | 3. | M | 28. | m | 51. |
| M | 4. | + | 29. | + | 52. |
| m | 5. | o | 30. | M | 53. |
| m | 6. | m | 31. | m | 54. |
| + | 7. | M | 32. | o | 55. |
| M | 8. | o | 33. | + | 56. |
| o | 9. | + | 34. | o | 57. |
| + | 10. | o | 35. | m | 58. |
| m | 11. | m | 36. | + | 59. |
| + | 12. | | Closed and open positions | M | 60. |
| m | 13. | | | o | 61. |
| M | 14. | m | 37. | + | 62. |
| + | 15. | o | 38. | o | 63. |
| + | 16. | + | 39. | M | 64. |
| o | 17. | + | 40. | m | 65. |
| m | 18. | m | 41. | M | 66. |
| o | 19. | M | 42. | + | 67. |
| M | 20. | M | 43. | m | 68. |
| + | 21. | m | 44. | o | 69. |
| M | 22. | + | 45. | M | 70. |
| m | 23. | o | 46. | o | 71. |
| o | 24. | M | 47. | M | 72. |
| o | 25. | o | 48. | | |

| ANS. | Major mode Choices: vi, IV, or ii |
|--|--------------------------------------|
| vi IV | 1. I _____ V I |
| vi ii | 2. I _____ V I |
| IV ii | 3. V I _____ V |
| vi IV | 4. I V _____ V |
| IV ii | 5. I _____ V I |
| Minor mode Choices: VI, iv, or ii ^{o6} | |
| VI iv | 6. i V _____ i |
| VI ii ^{o6} | 7. V i _____ V |
| iv ii ^{o6} | 8. V i _____ V |
| iv | 9. V i _____ V i |
| VI ii ^{o6} | 10. V _____ V i |
| Major mode Choices: vi, IV, or ii | |
| vi IV | 11. I _____ I V |
| IV ii | 12. I _____ V I |
| vi IV | 13. I _____ ii V |
| vi ii | 14. I V _____ V |
| vi IV | 15. I _____ V I |

LESSON 5

PART I: Error Detection

PART II: Completion

| ANSWERS | Major mode |
|---|-------------------------------|
| I I ii ii V IV | 1. I I vi ii V |
| I IV IV V I vi | 2. I IV IV V I |
| I V ii ii V vi | 3. I V IV ii V |
| I ii ii V I IV | 4. I vi ii V I |
| I V vi IV V ii | 5. I V vi IV V |
| i iv V V i ii ^{o6} | Minor mode 6. I iv V V i |
| i ii^{o6} ii ^{o6} V i iv | 7. i ii ^{o6} V V i |
| i ii^{o6} ii ^{o6} V i VI | 8. i iv ii ^{o6} V i |
| V ii^{o6} ii ^{o6} V VI | 9. V i iv ii ^{o6} V |
| V i ii^{o6} ii ^{o6} V i iv | 10. V i ii ^{o6} V i |
| V I vi I I IV | Major mode 11. V I vi ii I |
| V vi IV V V ii | 12. V vi IV IV V |
| I I V V I IV | 13. I I ii V I |
| I IV I V V I | 14. I IV I vi V |
| I vi V V I ii | 15. I vi IV v I |

| ANSWERS | Major mode |
|-----------------------|-----------------------------|
| V vi IV | 1. I _____ I |
| V vi ii | 2. I _____ V |
| I vi IV | 3. V _____ V |
| V I IV | 4. I _____ I |
| vi ii V | 5. I _____ I |
| VI ii ^{o6} V | Minor mode 6. V _____ i |
| i ii ^{o6} V | 7. V _____ i |
| i VI iv | 8. V _____ V |
| VI ii ^{o6} V | 9. i _____ i |
| iv i V | 10. i _____ i |
| IV ii V | Major mode 11. I _____ I |
| vi IV ii | 12. I _____ V |
| V vi IV | 13. I _____ I |
| I IV ii | 14. V _____ V |
| I IV V | 15. V _____ I |

LESSON 6

1. 


C: I — ii — vi — V

2. 


c: i — ii^{o6} — i — i

3. 

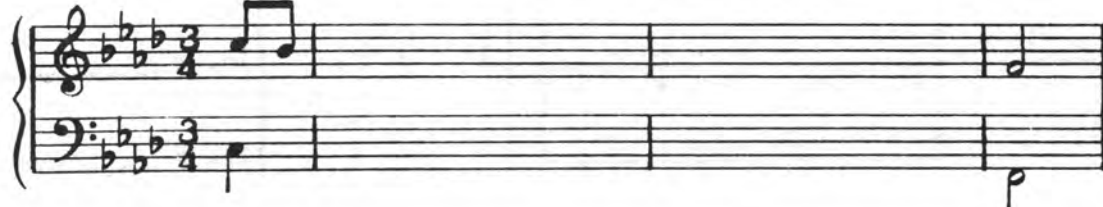
G: I — — IV — — I

4. 

g: i — — i — — V

5. 

F: I — — — — V

6. 

f: V — — — — i

ANSWERS ON PAGE 81

LESSON 7

PART I: Multiple Choice

| ANSWERS |
|----------------------|
| iii vi |
| vii ⁰⁶ |
| vii ⁰⁶ |
| vi vii ⁰⁶ |
| iii |

| Major mode. Choices: iii, vi, ii, or vii ⁰⁶ |
|---|
| 1. I _____ IV V |
| 2. I V _____ I V |
| 3. V _____ I IV I |
| 4. V _____ IV _____ I |
| 5. V I _____ V I |

| ANSWERS |
|----------------------|
| VI ii ⁰⁶ |
| VI ii ⁰⁶ |
| VI vii ⁰⁶ |
| VI |
| III |

| Minor mode. Choices: III, VI, ii ⁰⁶ , or vii ⁰⁶ |
|--|
| 6. i _____ V i |
| 7. i _____ iv _____ V |
| 8. i V _____ i |
| 9. V i _____ iv V |
| 10. i _____ iv V i |

PART II: Error detection

| ANSWERS |
|--|
| vi vi V ____ ii _____ |
| vi vi IV iii _____ |
| IV vi V ____ vii ⁰⁶ _____ |
| IV vi V ____ ii _____ |
| I vi IV ____ iii _____ |
| vi i iv vii ⁰⁶ _____ |
| i vi ii ⁰⁶ ____ iv _____ |
| V VI vi ____ iv _____ |
| vi iv ii ⁰⁶ VI _____ |
| iv vi vii ⁰⁶ ____ i ⁰⁶ _____ |

| Major mode |
|--------------------------------|
| 1. I vi IV V I |
| 2. I V vi IV V |
| 3. I IV ii V I |
| 4. I IV vii ⁰⁶ V I |
| 5. V I vi IV I |
| Minor mode |
| 6. V V i iv V |
| 7. V i VI ii ⁰⁶ V |
| 8. i V VI ii ⁰⁶ V |
| 9. i III iv ii ⁰⁶ V |
| 10. i iv V vii ⁰⁶ i |

PART III: Completion

| ANSWERS |
|-------------------------|
| iii IV I |
| vi ii V |
| I IV vii ⁰⁶ |
| vi IV ii |
| iii vi IV |
| III VI iv |
| VI iv ii ⁰⁶ |
| iv V vii ⁰⁶ |
| ii ⁰⁶ V i |
| i VI ii ⁰⁶ |
| I iii V |
| V vii ⁰⁶ I |
| IV ii vii ⁰⁶ |
| vii ⁰⁶ I IV |
| IV ii V |

| Major mode |
|---------------|
| 1. I _____ V |
| 2. I _____ I |
| 3. V _____ I |
| 4. V _____ V |
| 5. I _____ V |
| Minor mode |
| 6. i _____ V |
| 7. i _____ V |
| 8. i _____ i |
| 9. i _____ V |
| 10. V _____ V |
| Major mode |
| 11. V _____ I |
| 12. I _____ V |
| 13. I _____ I |
| 14. I _____ I |
| 15. I _____ I |

LESSON 8


1. 
C: I _____ _____ IV _____ _____ I

2. 
c: i _____ _____ iv _____ _____ i

3. 
G: _____ _____ _____ _____ _____ _____

4. 
g: i _____ _____ _____ _____ _____ V

5. 
F: I V _____ _____ _____ _____ _____

6. 
f: i _____ _____ _____ _____ _____

ANSWERS ON PAGE 81

LESSON 1

PART I: Identification of triad sonority & inversion.
Major & Minor sonorities in Root Pos. or First Inv.

PART II: Multiple Choice.
Circle the correct choice.

| ANS. | | ANS. | | ANS. | |
|------|-----|------|-----|------|-----|
| M | 1. | m6 | 25. | M6 | 49. |
| m6 | 2. | m6 | 26. | m | 50. |
| m | 3. | M | 27. | m6 | 51. |
| M6 | 4. | M | 28. | m | 52. |
| M | 5. | M6 | 29. | M6 | 53. |
| m6 | 6. | m | 30. | M | 54. |
| m | 7. | m | 31. | m6 | 55. |
| M6 | 8. | m | 32. | m | 56. |
| m6 | 9. | M6 | 33. | M | 57. |
| M | 10. | m | 34. | m | 58. |
| m6 | 11. | M6 | 35. | M6 | 59. |
| M | 12. | M | 36. | M6 | 60. |
| M6 | 13. | M6 | 37. | M | 61. |
| m | 14. | m6 | 38. | m6 | 62. |
| M | 15. | M | 39. | M6 | 63. |
| m | 16. | m6 | 40. | m | 64. |
| M6 | 17. | M | 41. | m6 | 65. |
| M6 | 18. | m | 42. | M | 66. |
| m | 19. | M6 | 43. | M | 67. |
| m6 | 20. | m6 | 44. | m6 | 68. |
| M | 21. | M | 45. | M6 | 69. |
| m6 | 22. | m6 | 46. | m | 70. |
| M | 23. | M | 47. | M6 | 71. |
| M6 | 24. | m6 | 48. | m | 72. |

| ANSWERS | Major mode |
|------------|--|
| IV | 1. I < ^{IV} _{i16} > V I |
| I6 | 2. I IV < ⁱⁱⁱ _{I6} > V |
| V6 | 3. I < ^{V6} _{vii06} > V I |
| i16 | 4. I vi < ^{IV} _{i16} > V |
| vii06 | 5. I IV < ⁱⁱ _{vii06} > I |
| Minor mode | |
| i6 | 6. i < ^{III} _{i6} > V i |
| ii06 | 7. i < ^{iv} _{ii06} > V i |
| iv | 8. i VI < ^{iv} _{ii06} > V |
| iv6 | 9. i < ^{VI} _{iv6} > ii06 V |
| vii06 | 10. i < ⁱⁱ⁰ _{vii06} > i6 i |
| Major mode | |
| ii | 11. I < ⁱⁱ _{vii06} > V I |
| IV6 | 12. I < ^{vi} _{IV6} > IV I |
| iii | 13. I < ⁱⁱⁱ _{I6} > V I |
| ii6 | 14. I < ^{IV} _{ii6} > V I |
| I6 | 15. I V < ⁱⁱⁱ _{I6} > I |

PART I: Completion

Major mode

- | | |
|-----------|-----------------|
| ANSWERS | |
| I6 IV | 1. I _____ V I |
| vi IV6 | 2. I V _____ V |
| ii6 vii°6 | 3. I IV _____ I |
| vi ii6 | 4. I _____ V I |
| vii°6 I6 | 5. I _____ IV V |

Minor mode

- | | |
|----------|-----------------|
| iv ii°6 | 6. i VI _____ V |
| i6 ii°6 | 7. i V _____ V |
| iv vii°6 | 8. i _____ V i |
| i6 ii°6 | 9. i _____ V i |

Major mode

- | | |
|----------|-------------------|
| V6 V | 11. I _____ I6 V |
| vi ii6 | 12. I iii _____ V |
| IV6 IV | 13. I _____ V I |
| I6 IV | 14. I V _____ I |
| I6 vii°6 | 15. I _____ I V |

PART II: Error detection. Cross out each incorrect pitch and write the correct pitch next to it. Cross out each incorrect figured bass symbol and write the correct symbol in the space beneath.

1.

B^b: I I6 IV I6 IV V I

2.

g: i iv V iv6 iv vii°6 V

PART III: Dictation

1.

D: I _____ I

2.

b: i _____

ANSWERS TO PARTS II AND III ON PAGE 82

LESSON 3

PART I: Completion

PART II: Error detection

ANSWERS

Major mode

I6 IV IV6 1. I _____ V

IV ii6 V 2. I _____ I

V I6 I 3. I _____ V

iii vi IV6 4. I _____ V

IV vii°6 V 5. I _____ I

Minor mode

iv ii°6 V 6. i _____ i

VI ii°6 vii°6 7. i _____ i

III iv i6 8. i _____ V

i6 iv i 9. i _____ V

iv6 iv ii°6 10. i _____ V

Major mode

V vi ii6 11. I _____ V

vi ii6 V 12. I _____ I

IV I6 ii6 13. I _____ V

IV6 IV I6 14. I _____ V

ii6 V vii°6 15. I _____ I

1.

A: I IV V vi IV ii6 I

2.

a: i i6 ii°6 i6 V i V

PART III: Dictation

1.

Eb: I _____

2.

c: i _____

ANSWERS TO PARTS II AND III ON PAGE 82

LESSON 4

PART I: Error detection

1.

G: I vi ii6 I6 IV V6 I

2.

b: i iv V i6 VI6 V6 i

PART II: Dictation

1.

F I _____ V

2.

g: i _____ i

3.

E^b: I _____

LESSON 5

PART I: Identification of triad sonority & inversion. Major & Minor triads in Root pos., 1st inv. or 2nd inv.

PART II: Multiple choice. Circle the correct choice.

| ANS. | | ANS. | | ANS. | |
|-----------------------------|-----|-----------------------------|-----|-----------------------------|-----|
| m ₄ ⁶ | 1. | m ₄ ⁶ | 25. | m ₄ ⁶ | 49. |
| M ₄ ⁶ | 2. | m | 26. | M ₄ ⁶ | 50. |
| M | 3. | M ₄ ⁶ | 27. | m ₄ ⁶ | 51. |
| m ₄ ⁶ | 4. | M6 | 28. | m | 52. |
| M6 | 5. | M6 | 29. | M ₄ ⁶ | 53. |
| m | 6. | m ₄ ⁶ | 30. | M | 54. |
| m ₄ ⁶ | 7. | M | 31. | M6 | 55. |
| M6 | 8. | m ₄ ⁶ | 32. | m6 | 56. |
| M | 9. | m6 | 33. | m | 57. |
| M ₄ ⁶ | 10. | M ₄ ⁶ | 34. | M ₄ ⁶ | 58. |
| m ₄ ⁶ | 11. | M | 35. | m ₄ ⁶ | 59. |
| M | 12. | M ₄ ⁶ | 36. | m6 | 60. |
| M6 | 13. | M6 | 37. | M6 | 61. |
| m6 | 14. | m6 | 38. | M ₄ ⁶ | 62. |
| M ₄ ⁶ | 15. | m | 39. | m | 63. |
| m6 | 16. | m ₄ ⁶ | 40. | m ₄ ⁶ | 64. |
| m ₄ ⁶ | 17. | m6 | 41. | m6 | 65. |
| m | 18. | M ₄ ⁶ | 42. | m6 | 66. |
| M ₄ ⁶ | 19. | M | 43. | M | 67. |
| m | 20. | M6 | 44. | m ₄ ⁶ | 68. |
| M ₄ ⁶ | 21. | m ₄ ⁶ | 45. | M ₄ ⁶ | 69. |
| M | 22. | m | 46. | m6 | 70. |
| m6 | 23. | M6 | 47. | M ₄ ⁶ | 71. |
| M | 24. | M | 48. | M6 | 72. |

| ANSWERS | Major mode |
|------------------------------|---|
| I ₄ ⁶ | 1. I IV < $\frac{V}{I_4^6}$ > V I |
| V ₄ ⁶ | 2. I < $\frac{vii^{06}}{V_4^6}$ > I6 IV I |
| IV ₄ ⁶ | 3. I < $\frac{IV}{IV_4^6}$ > I V6 I |
| V | 4. I ii6 < $\frac{V}{I_4^6}$ > V I |
| vii ⁰⁶ | 5. I I6 < $\frac{vii^{06}}{V_4^6}$ > I V |
| Minor mode | |
| iv | 6. i VI < $\frac{iv}{iv_4^6}$ > i V |
| i | 7. i iv < $\frac{i}{i_4^6}$ > V i |
| iv ₄ ⁶ | 8. i V < $\frac{iv6}{iv_4^6}$ > i V |
| i ₄ ⁶ | 9. i ii ⁰⁶ < $\frac{V}{i_4^6}$ > V i |
| V ₄ ⁶ | 10. i V i6 < $\frac{vii^{06}}{V_4^6}$ > i |
| Major mode | |
| IV | 11. I iii < $\frac{IV}{IV_4^6}$ > I V |
| vii ⁰⁶ | 12. I < $\frac{vii^{06}}{V_4^6}$ > I6 IV V |
| V | 13. I iii < $\frac{V}{I_4^6}$ > V6 I |
| IV ₄ ⁶ | 14. I < $\frac{IV}{IV_4^6}$ > V6 V I |
| V ₄ ⁶ | 15. I I6 < $\frac{vii^{06}}{V_4^6}$ > I V |

PART I: Completion

PART II: Error detection

ANSWERS

Major mode

I6 V⁶₄ 1. I V _____ I

IV⁶₄ I 2. I V _____ V

ii6 I⁶₄ 3. I _____ V I

ii6 I⁶₄ 4. I vi _____ V

IV V⁶₄ 5. I iii _____ I

Minor mode

i6 i⁶₄ 6. i _____ V i

iv⁶₄ i 7. i _____ V i

V⁶₄ i6 8. i _____ iv V

III iv⁶₄ 9. i _____ iv _____ i

iv i⁶₄ 10. i _____ V i

Major mode

I6 vii^o6 11. I IV _____ I

I6 I⁶₄ 12. I _____ IV _____ V

I IV⁶₄ 13. I V _____ I

iii I⁶₄ 14. I _____ V I

I6 V⁶₄ 15. I _____ I V

1.

Bb: I vii^o6 I6 IV V V I

2.

g: i iv V i V⁶₄ i6 V

PART III: Dictation

1.

D: I _____

2.

b: i _____

ANSWERS TO PARTS II AND III ON PAGE 83

LESSON 7

PART I: Completion

PART II: Error detection

ANSWERS

Major mode

- | | |
|---|---------------|
| IV IV ⁶ / ₄ I | 1. I _____ V |
| I ⁶ V ⁶ / ₄ I | 2. I _____ V |
| ii ⁶ I ⁶ / ₄ V | 3. I _____ I |
| V I ⁶ vii ^o 6 | 4. I _____ I |
| iii IV I ⁶ / ₄ | 5. I _____ V |
| Minor mode | |
| VI ii ^o 6 i ⁶ / ₄ | 6. i _____ V |
| iv i ⁶ V ⁶ / ₄ | 7. i _____ i |
| V iv ⁶ / ₄ i | 8. i _____ V |
| III i ⁶ / ₄ V | 9. i _____ i |
| V VI iv ⁶ / ₄ | 10. i _____ i |
| Major mode | |
| V ⁶ IV ⁶ / ₄ I | 11. I _____ V |
| V ⁶ / ₄ I ⁶ IV | 12. I _____ I |
| vi ii ⁶ I ⁶ / ₄ | 13. I _____ V |
| V V ⁶ V ⁶ / ₄ | 14. I _____ I |
| vii ^o 6 I ⁶ V ⁶ / ₄ | 15. I _____ I |

1.

A: I iii IV IV⁶/₄ I IV V

2.

a: i iv ii^o6 V⁶/₄ i⁶ V i

PART III: Dictation

1.

E^b: I _____ I

2.

c: i _____

ANSWERS TO PARTS II AND III ON PAGE 83

PART I: Error detection

1.

G: I iii IV IV6 I⁶₄ V I

2.

b: i V V iv6 iv iv6 V

PART II: Dictation

1.

F: _____

2.

g: _____

3.

A: _____

LESSON 1

PART I: Identification of M, m, +, & ° triad sonority
(There are no inversions to be identified)

PART II: Completion

| ANS. | Closed position | ANS. | | ANS. | | ANSWERS | Major mode |
|------|-----------------|-------------------------|-----|------|-----|---------------------|------------------|
| M | 1. | + | 25. | m | 49. | IV I | 1. I _____ V I |
| M | 2. | o | 26. | + | 50. | iii IV | 2. I _____ I V |
| m | 3. | M | 27. | o | 51. | vi ii | 3. I _____ V I |
| M | 4. | m | 28. | M | 52. | IV V | 4. I V I _____ |
| m | 5. | M | 29. | o | 53. | I IV | 5. I _____ V I |
| m | 6. | m | 30. | m | 54. | | Minor mode |
| o | 7. | M | 31. | M | 55. | ii°6 V | 6. i iv _____ i |
| + | 8. | + | 32. | m | 56. | iv i°6 | 7. i VI _____ V |
| m | 9. | m | 33. | m | 57. | III ⁺ VI | 8. i _____ iv V |
| o | 10. | M | 34. | o | 58. | VI ii°6 | 9. i _____ V i |
| M | 11. | o | 35. | M | 59. | III iv | 10. i _____ V i |
| m | 12. | m | 36. | + | 60. | | Major mode |
| + | 13. | Closed & open positions | | m | 61. | IV ii | 11. I _____ V I |
| M | 14. | M | 37. | + | 62. | vi IV | 12. I _____ V I |
| o | 15. | m | 38. | M | 63. | ii V | 13. I V vi _____ |
| m | 16. | + | 39. | m | 64. | iii vi | 14. I _____ IV I |
| + | 17. | o | 40. | M | 65. | V V | 15. I IV _____ I |
| m | 18. | m | 41. | M | 66. | | |
| M | 19. | M | 42. | m | 67. | | |
| o | 20. | m | 43. | M | 68. | | |
| M | 21. | M | 44. | o | 69. | | |
| + | 22. | m | 45. | m | 70. | | |
| m | 23. | M | 46. | m | 71. | | |
| M | 24. | + | 47. | M | 72. | | |
| | | M | 48. | | | | |

UNIT IV

LESSON 2

PART I: Identification of triad sonority & inversion.
It is not necessary to identify inversions of diminished and augmented triads. Major and minor triads may be in root position, 1st inv., or 2nd inv.

PART II: Completion

| ANS. | | ANS. | | ANS. | |
|-----------------------------|-----|-----------------------------|-----|-----------------------------|-----|
| m | 1. | M6 | 25. | M | 49. |
| M ₄ ⁶ | 2. | m6 | 26. | m6 | 50. |
| o | 3. | + | 27. | m ₄ ⁶ | 51. |
| + | 4. | M ₄ ⁶ | 28. | M6 | 52. |
| M6 | 5. | M | 29. | M ₄ ⁶ | 53. |
| m ₄ ⁶ | 6. | o | 30. | m6 | 54. |
| M6 | 7. | m6 | 31. | + | 55. |
| m6 | 8. | M ₄ ⁶ | 32. | m | 56. |
| M | 9. | m | 33. | M | 57. |
| m | 10. | M | 34. | o | 58. |
| o | 11. | m ₄ ⁶ | 35. | m6 | 59. |
| M6 | 12. | m6 | 36. | M ₄ ⁶ | 60. |
| + | 13. | + | 37. | m ₄ ⁶ | 61. |
| m ₄ ⁶ | 14. | M ₄ ⁶ | 38. | m | 62. |
| m | 15. | M6 | 39. | o | 63. |
| M ₄ ⁶ | 16. | m | 40. | M6 | 64. |
| M | 17. | m6 | 41. | + | 65. |
| m6 | 18. | o | 42. | M6 | 66. |
| M6 | 19. | m ₄ ⁶ | 43. | m | 67. |
| m ₄ ⁶ | 20. | M ₄ ⁶ | 44. | m6 | 68. |
| m | 21. | M | 45. | M | 69. |
| o | 22. | + | 46. | m ₄ ⁶ | 70. |
| M ₄ ⁶ | 23. | M6 | 47. | M ₄ ⁶ | 71. |
| M | 24. | m | 48. | M | 72. |

ANSWERS

Major mode

- I6 IV 1. I _____ V I
- IV IV6 2. I _____ V I
- IV ii6 3. I _____ V I
- I6 ii6 4. I _____ V I
- IV₄⁶ I 5. I _____ IV V

Minor mode

- VI iv6 6. i V _____ V
- i6 v₄⁶ 7. i _____ i V
- ii^o6 V 8. i _____ i V
- v₄⁶ i6 9. i _____ iv i
- iv i₄⁶ 10. i _____ V i

Major mode

- vi ii6 11. I _____ V I
- ii6 I₄⁶ 12. I _____ V I
- V V6 13. I IV _____ I
- IV₄⁶ I 14. I IV _____ V
- iii IV 15. I _____ V I

LESSON 3

PART I: Error detection

PART II: Completion

| ANSWERS | |
|--|--|
| I vi IV V I <u>ii6</u> | 1. I vi IV V I |
| I I6 IV V V <u>V</u> | 2. I I6 IV V I |
| I I6 / ii6 V I <u>iii</u> | 3. I I6 ii6 V I |
| I I6 ii6 I V <u>v6</u> | 4. I I6 vii ^o 6 I V |
| I IV V V I <u>I6</u> | 5. I IV V V I |
| i ii6 iv6 V i <u>iv</u> | 6. i ii ^o 6 iv6 V i |
| i III VI iv V <u>i6</u> | 7. i III VI iv V |
| i III iv ii ^o 6 V <u>VI</u> | 8. i III iv ii ^o 6 V |
| i v ₄ ^o i6 IV V <u>i</u> | 9. i v ₄ ^o i6 iv V |
| i III VI iv V <u>i</u> | 10. i III VI iv V |
| I IV V I V <u>IV6</u> | 11. I IV V I V |
| I vi IV v ^o I <u>IV6</u> | 12. I vi IV v ^o I |
| I iii V V I <u>I6</u> | 13. I iii V V I |
| I I6 IV ii6 V <u>IV</u> | 14. I I6 vi ii6 V |
| I IV IV V I <u>I6</u> | 15. I IV I ₄ ^o V I |

| ANSWERS | |
|--------------------------------|---------------------|
| iii IV | 1. I _____ V I |
| vi IV | 2. I _____ I V |
| IV I ⁶ | 3. I _____ V I |
| I6 IV | 4. I _____ IV6 V |
| IV ii6 | 5. I _____ V I |
| III iv | 6. i _____ V i |
| i6 i ₄ ^o | 7. i _____ V i |
| i6 iv | 8. i _____ iv6 V |
| VI iv | 9. i _____ V i |
| iv i6 | 10. i _____ V i |
| I6 IV | 11. I _____ IV I |
| iii vi | 12. I _____ IV V |
| IV I | 13. I _____ I6 V |
| I6 ii | 14. I _____ V I |
| vi ii | 15. I _____ V I |
| III iv | 16. i _____ i V |
| VI iv | 17. i _____ i6 V |
| VI iv | 18. i _____ iv i |
| III VI | 19. i _____ iv i |
| i6 ii ^o 6 | 20. i _____ V i |
| V vi | 21. I _____ IV V |
| vi IV6 | 22. I _____ V I |
| vi IV | 23. I _____ I6 V |
| V I6 | 24. I _____ IV V |
| IV ii | 25. I _____ V I |

PART I: Error detection

PART II: Completion

| ANSWERS | |
|---|---|
| I iii IV6 V I IV | 1. I iii IV6 V I |
| I iii vi ii6 V IV | 2. I iii vi ii6 V |
| I vi ii ii V IV | 3. I vi ii6 ii V |
| I vi IV6 V I V6 | 4. I vi IV6 V I |
| I vi ii6 V I I6 | 5. I vi ii6 V I |
| i III VI ii ^o 6 V i6 | 6. i III VI ii ^o 6 V |
| i iv ⁶ iii V i V6 | 7. i iv ⁶ vii ^o 6 V i |
| i V6 ii iv6 V i | 8. i V6 VI6 iv6 V |
| i vi i i6 V iv | 9. i V i i6 V |
| i VI ii V i iv | 10. i VI ii ^o 6 V i |
| I IV I6 iii I V ⁶ | 11. I IV I6 vii ^o 6 I |
| I vi IV V iii | 12. I I6 vi IV V |
| I I6 IV I V V | 13. I I6 IV I V |
| I IV IV I6 V vi | 14. I IV6 IV I6 V |
| I iii ii V I IV | 15. I iii ii V I |

| ANSWERS | |
|----------------------------------|---------------------------------|
| I6 vii ^o 6 | 1. I _____ I V |
| I IV | 2. I _____ V I |
| V I6 | 3. I _____ IV I |
| vi V6 | 4. I _____ I V |
| I6 IV | 5. I _____ V I |
| i6 ii ^o 6 | 6. i _____ V i |
| VI iv6 | 7. i _____ iv i |
| ii ^o 6 i ⁶ | 8. i _____ V i |
| iv ii ^o 6 | 9. i _____ V i |
| III iv | 10. i _____ V i |
| IV I6 | 11. I _____ I V |
| V ⁶ I6 | 12. I _____ IV I |
| V vi | 13. I _____ ii6 V |
| vi IV6 | 14. I _____ V I |
| IV ii | 15. I _____ V I |
| VI iv | 16. i _____ i V |
| i6 V | 17. i _____ V6 i |
| III+ VI | 18. i _____ ii ^o 6 V |
| iv iv6 | 19. i _____ i V |
| V i6 | 20. i _____ V ⁶ i |
| vi IV | 21. I _____ V I |
| vi IV | 22. I _____ ii6 V |
| iii V | 23. I _____ V6 I |
| IV ii6 | 24. I _____ ii V |
| I6 I ⁶ | 25. I _____ V I |

LESSON 5

ANSWERS

PART I: Completion

PART II: Dictation

| | |
|-----------------------------------|---------------|
| iii ii6 V | 1. I _____ I |
| V ₄ ⁶ I6 IV | 2. I _____ I |
| vi ii ii6 | 3. I _____ V |
| IV vii ^o 6 I | 4. I _____ V |
| ii6 I ₄ ⁶ V | 5. I _____ I |
| iv6 iv V | 6. i _____ i |
| i6 V ₄ ⁶ i | 7. i _____ V |
| V VI ii ^o 6 | 8. i _____ V |
| III V V6 | 9. i _____ i |
| vii ^o 6 i6 iv | 10. i _____ V |
| I6 IV IV6 | 11. I _____ I |
| IV ii ii6 | 12. I _____ V |
| V6 I IV ₄ ⁶ | 13. I _____ I |
| iii I ₄ ⁶ V | 14. I _____ I |
| vi IV IV | 15. I _____ I |
| iv V V6 | 16. i _____ i |
| VI iv iv | 17. i _____ i |
| V6 i iv | 18. i _____ V |
| VI iv6 iv | 19. i _____ i |
| III i ₄ ⁶ V | 20. i _____ i |
| I6 I ₄ ⁶ V | 21. I _____ I |
| iii IV ii6 | 22. I _____ V |
| V ₄ ⁶ I6 I | 23. I _____ V |
| I6 vi IV | 24. I _____ I |
| IV IV6 I | 25. I _____ V |

1.

F: I _____

2.

f: i _____

3.

D: I _____

4.

d: i _____

ANSWERS TO PART II ON PAGE 84

| ANSWERS |
|--|
| I6 IV ii |
| IV V V6 |
| V vi IV |
| iii IV IV6 |
| I6 I ₄ ⁶ V |
| III ii ^o 6 V |
| VI iv i |
| VI ii ^o 6 V |
| V ₄ ⁶ i6 ii ^o 6 |
| V i6 iv |
| vi IV ii |
| IV I6 V ₄ ⁶ |
| vi ii V |
| V ₄ ⁶ I6 IV |
| I6 ii V6 |
| iv i ₄ ⁶ V |
| iv ₄ ⁶ i ii ^o 6 |
| ii ^o 6 i ₄ ⁶ V |
| V i iv6 |
| III iv V |
| IV I I6 |
| iii IV ii |
| V vi IV |
| vi IV I6 |
| V vi V |

| PART I: Completion |
|--------------------|
| 1. I _____ V |
| 2. I _____ I |
| 3. I _____ V |
| 4. I _____ V |
| 5. I _____ I |
| 6. i _____ i |
| 7. i _____ V |
| 8. i _____ i |
| 9. i _____ V |
| 10. i _____ i |
| 11. I _____ V |
| 12. I _____ I |
| 13. I _____ I |
| 14. I _____ V |
| 15. I _____ I |
| 16. i _____ i |
| 17. i _____ V |
| 18. i _____ i |
| 19. i _____ V |
| 20. i _____ i |
| 21. I _____ V |
| 22. I _____ V |
| 23. I _____ I |
| 24. I _____ V |
| 25. I _____ I |

PART II: Dictation

1. 

C: _____

2. 

c: _____

3. 

g: _____

4. 

G: _____

ANSWERS TO PART II ON PAGE 84

LESSON 7

PART I: Error detection

1.

F: I iii vi IV V V6 I

2.

c: i iv vii°6 V6 i VI V

PART II: Dictation

1.

G: _____

2.

d: _____

3.

D: _____

ANSWERS ON PAGE 83

PART I: Error detection

1.

A: I vi IV V vi IV I

2.

g: i VI iv vii°6 i⁶ V i

PART II: Dictation

1.

e: -----

2.

B^b: -----

3.

D: -----

LESSON 1

PART I: Identification of dominant 7th & minor 7th sonorities (All chords are in root position).

PART II: Multiple choice Major mode. Choices: V7, ii7, vi7, and iii7 in root position.

PART III: Multiple choice Minor mode. Choices: V7, i7, and iv7 in root position.

| ANS. | | ANS. | |
|------|-----|------|-----|
| V7 | 1. | V7 | 25. |
| m7 | 2. | V7 | 26. |
| V7 | 3. | V7 | 27. |
| m7 | 4. | m7 | 28. |
| m7 | 5. | V7 | 29. |
| V7 | 6. | m7 | 30. |
| V7 | 7. | m7 | 31. |
| V7 | 8. | V7 | 32. |
| m7 | 9. | m7 | 33. |
| m7 | 10. | V7 | 34. |
| V7 | 11. | m7 | 35. |
| m7 | 12. | V7 | 36. |
| m7 | 13. | V7 | 37. |
| m7 | 14. | m7 | 38. |
| V7 | 15. | m7 | 39. |
| V7 | 16. | m7 | 40. |
| m7 | 17. | m7 | 41. |
| m7 | 18. | m7 | 42. |
| V7 | 19. | V7 | 43. |
| V7 | 20. | V7 | 44. |
| m7 | 21. | m7 | 45. |
| V7 | 22. | V7 | 46. |
| m7 | 23. | m7 | 47. |
| m7 | 24. | V7 | 48. |

| ANS. | |
|------|-------------------------------|
| ii7 | 1. I ____ V7 I |
| iii7 | 2. I ____ vi IV |
| ii7 | 3. I vi ____ V |
| vi7 | 4. I ____ IV I |
| ii7 | 5. IV ____ V7 I |
| V7 | 6. I ____ vi IV |
| vi7 | 7. I V6 ____ V7 |
| V7 | 8. I I ₄ ^6 ____ I |
| V7 | 9. I ii6 ____ I |
| ii7 | 10. I ____ V7 I |
| V7 | 11. I V ____ I |
| iii7 | 12. I ____ vi IV |
| vi7 | 13. I ____ ii7 V7 |
| ii7 | 14. I IV ____ V |
| V7 | 15. I I6 ____ I |

| ANS. | |
|------|--------------------------------|
| V7 | 1. i ____ VI iv |
| V7 | 2. i V ____ i |
| iv7 | 3. i ____ ii°6 V |
| i7 | 4. i ____ iv i |
| iv7 | 5. i iv ____ V |
| iv7 | 6. i ____ V i |
| i7 | 7. i ____ iv V |
| V7 | 8. ____ VI iv V |
| iv7 | 9. i iv ____ V |
| V7 | 10. i i ₄ ^6 ____ i |

LESSON 2

PART I: Identification of dominant 7th and minor 7th sonorities in root position and inversions.

PART II: Multiple choice Major mode. Choices: V7, ii7, vi7, iii7, in root position & inversions
 PART III: Multiple choice Minor mode. Choices: V7, i7, iv7, in root position & inversions.

| ANS. | | ANS. | |
|-----------------|-----|-----------------|-----|
| V $\frac{1}{2}$ | 1. | V $\frac{1}{3}$ | 25. |
| m $\frac{6}{5}$ | 2. | m7 | 26. |
| m $\frac{1}{3}$ | 3. | V7 | 27. |
| m7 | 4. | V $\frac{1}{3}$ | 28. |
| V7 | 5. | m $\frac{1}{3}$ | 29. |
| V $\frac{1}{3}$ | 6. | V $\frac{6}{5}$ | 30. |
| V $\frac{6}{5}$ | 7. | V7 | 31. |
| m $\frac{1}{2}$ | 8. | m $\frac{1}{3}$ | 32. |
| m $\frac{6}{5}$ | 9. | m7 | 33. |
| V $\frac{1}{2}$ | 10. | V $\frac{6}{5}$ | 34. |
| m $\frac{1}{2}$ | 11. | m $\frac{6}{5}$ | 35. |
| V $\frac{1}{3}$ | 12. | m $\frac{1}{3}$ | 36. |
| V $\frac{6}{5}$ | 13. | V $\frac{6}{5}$ | 37. |
| V $\frac{6}{5}$ | 14. | m $\frac{1}{2}$ | 38. |
| m $\frac{1}{3}$ | 15. | V $\frac{1}{3}$ | 39. |
| V7 | 16. | m7 | 40. |
| m $\frac{6}{5}$ | 17. | m $\frac{6}{5}$ | 41. |
| m7 | 18. | V $\frac{1}{2}$ | 42. |
| V $\frac{1}{2}$ | 19. | V7 | 43. |
| m $\frac{1}{2}$ | 20. | V $\frac{1}{3}$ | 44. |
| V7 | 21. | m $\frac{1}{2}$ | 45. |
| m7 | 22. | V $\frac{1}{2}$ | 46. |
| V $\frac{6}{5}$ | 23. | m $\frac{6}{5}$ | 47. |
| m $\frac{1}{3}$ | 24. | V7 | 48. |

| ANS. | |
|------------------|------------------------------|
| iii7 | 1. I ____ vi IV |
| ii $\frac{6}{5}$ | 2. I ____ V I |
| ii $\frac{1}{2}$ | 3. ii ____ V $\frac{6}{5}$ I |
| V $\frac{6}{5}$ | 4. I ____ vi IV |
| ii $\frac{6}{5}$ | 5. I ____ v $\frac{8-7$ I |
| V $\frac{1}{3}$ | 6. I ____ I6 IV |
| V $\frac{6}{5}$ | 7. I ____ I V |
| vi $\frac{6}{5}$ | 8. I ____ ii V |
| V $\frac{1}{2}$ | 9. V ____ I6 IV |
| ii $\frac{6}{5}$ | 10. IV ____ V I |
| ii $\frac{1}{3}$ | 11. I vi ____ V |
| vi7 | 12. I ____ IV I |
| iii7 | 13. I ____ IV V |
| V $\frac{1}{3}$ | 14. I6 ____ I V |
| ii $\frac{1}{2}$ | 15. I ____ V $\frac{6}{5}$ I |

| ANS. | |
|------------------|------------------------------|
| V7 | 1. i ii $\frac{6}{5}$ ____ i |
| iv $\frac{6}{5}$ | 2. i ____ ii $\frac{6}{5}$ V |
| i7 | 3. i ____ iv V |
| iv7 | 4. i iv ____ V7 |
| V7 | 5. i iv ____ i |
| i $\frac{1}{2}$ | 6. i ____ iv $\frac{6}{5}$ V |
| V $\frac{6}{5}$ | 7. i ____ i V $\frac{6}{5}$ |
| iv $\frac{1}{3}$ | 8. i ____ V $\frac{6}{5}$ i |
| V $\frac{1}{3}$ | 9. i ____ i6 iv |
| V7 | 10. i iv ____ i |

LESSON 3

ANSWERS

PART I: Completion

- | | |
|----------------------------------|---|
| ii ⁶ ₅ V | 1. I IV _____ I |
| ii7 V7 | 2. I I6 _____ I |
| IV V7 | 3. I iii _____ I |
| iii7 vi | 4. I _____ IV V |
| I6 v ⁴ ₃ | 5. I v ⁴ ₂ _____ I |
| VI iv7 | 6. i i6 _____ V |
| iv V7 | 7. i iv6 _____ i |
| V v ⁶ ₅ | 8. i III _____ i |
| i ⁴ ₂ iv6 | 9. i _____ ii ^o 6 V |
| i ⁶ ₄ V7 | 10. i i6 _____ i |
| IV ii ⁶ ₅ | 11. I I6 _____ V |
| v ⁶ ₅ vi7 | 12. I _____ ii V |
| v ⁴ ₂ I6 | 13. I IV _____ V |
| ii ⁶ ₅ V7 | 14. I vi _____ I |
| I ⁶ ₄ V7 | 15. I IV _____ I |
| v ⁴ ₂ i6 | 16. i V _____ V7 |
| V v ⁶ ₅ | 17. i iv _____ i |
| i ⁶ ₅ iv | 18. i _____ V I |
| v ⁴ ₃ i6 | 19. i _____ iv V |
| iv7 V7 | 20. i VI _____ i |
| ii7 ii ⁶ ₅ | 21. I vi _____ V |
| v ⁶ ₅ I | 22. I vi _____ V |
| V7 vi | 23. I _____ vi ⁴ ₂ IV |
| v ⁴ ₃ I | 24. I I6 _____ V |
| ii7 V7 | 25. I IV _____ I |

PART II: Dictation

1.

C: _____

2.

b: _____

3.

G: _____

4.

e: _____

ANSWERS TO PART II ON PAGE 84

LESSON 4

PART I: Identification of 7th chord sonorities. Choices: o7 & ø7: Root position only V7 & m7: Root pos. & inversions.

PART II: Multiple choice. Minor mode. Choices: i1^{ø6}, vii^{o7}, iv7, & V7 in root position & inversions. PART III: Multiple choice. Major mode. Choices: vii^{o7}, V7, i1⁷, & vi7 in root position & inversions.

| ANS. | | ANS. | |
|-----------------------------|-----|-----------------------------|-----|
| V7 | 1. | o7 | 25. |
| ø7 | 2. | ø7 | 26. |
| o7 | 3. | m ⁶ ₅ | 27. |
| m7 | 4. | V ⁴ ₂ | 28. |
| V ⁴ ₃ | 5. | V7 | 29. |
| ø7 | 6. | m ⁴ ₃ | 30. |
| m ⁶ ₅ | 7. | m7 | 31. |
| V ⁶ ₅ | 8. | o7 | 32. |
| o7 | 9. | o7 | 33. |
| m ⁴ ₂ | 10. | V ⁶ ₅ | 34. |
| m ⁴ ₂ | 11. | m ⁶ ₅ | 35. |
| V ⁶ ₅ | 12. | ø7 | 36. |
| o7 | 13. | ø7 | 37. |
| m ⁶ ₅ | 14. | o7 | 38. |
| ø7 | 15. | V ⁴ ₃ | 39. |
| V7 | 16. | o7 | 40. |
| ø7 | 17. | V7 | 41. |
| m ⁴ ₃ | 18. | V7 | 42. |
| V ⁴ ₃ | 19. | ø7 | 43. |
| V ⁴ ₂ | 20. | o7 | 44. |
| m ⁴ ₃ | 21. | ø7 | 45. |
| m7 | 22. | m ⁶ ₅ | 46. |
| o7 | 23. | V ⁴ ₂ | 47. |
| V ⁴ ₂ | 24. | ø7 | 48. |

| ANS. | |
|--------------------------------|---|
| i1 ^{ø6} ₅ | 1. i iv ____ V |
| vii ^{o7} | 2. i ____ i V |
| vii ^{o6} ₅ | 3. i6 ____ i V |
| i1 ^{ø6} ₅ | 4. V7 VI ____ V |
| i1 ^{ø4} ₂ | 5. i ____ V ⁶ ₅ i |
| V7 | 6. i i16 ____ i |
| vii ^{o4} ₂ | 7. V ____ VI V |
| i1 ^{ø4} ₃ | 8. i i ⁴ ₂ ____ V |
| V ⁴ ₂ | 9. V ____ i6 iv |
| V7 | 10. iv i ⁶ ₄ ____ i |
| vii ^{o6} ₅ | 11. i ____ i6 V |
| iv7 | 12. V VI ____ V |
| i1 ^{ø6} ₅ | 13. V i ____ V |
| vii ^{o6} ₅ | 14. i iv ⁶ ₄ ____ i6 |
| iv7 | 15. ____ i ⁶ ₄ V ⁸ 7 i |

| ANS. | |
|--------------------------------|--|
| V ⁴ ₂ | 1. I ____ I6 IV |
| vii ^{ø4} ₃ | 2. I ____ I6 V |
| vii ^{ø6} ₅ | 3. I ____ I6 V |
| vii ^{ø7} | 4. I ____ V ⁶ ₅ I |
| i1 ⁶ ₅ | 5. IV ____ V I |
| vi7 | 6. I ____ IV I |
| vii ^{ø7} | 7. I ____ I V |
| i1 ⁶ ₅ | 8. V ⁴ ₂ I6 ____ V |
| V7 | 9. I i16 ____ I |
| i1 ⁴ ₂ | 10. IV i1 ____ V6 |

LESSON 5

| ANSWERS | PART I: Completion |
|---|--|
| ii [♭] 7 v [♭] ₅ | 1. i iv _____ i |
| vii [♭] 0 ₅ i | 2. i i6 _____ V7 |
| iv ii [♭] ₅ | 3. i III _____ V |
| iv7 ii [♭] ₅ | 4. i iv _____ V7 |
| ii [♭] 7 vii [♭] 0 ₅ | 5. i iv _____ I |
| ii [♭] ₅ I [♭] ₄ | 6. I _____ V7 I |
| v v [♭] ₂ | 7. I _____ I6 V |
| IV vii [♭] ₅ | 8. I iii _____ I |
| v [♭] ₃ I | 9. I I6 _____ V7 |
| v v [♭] ₅ | 10. I I6 _____ I |
| VI ii [♭] ₅ | 11. i v _____ V7 |
| VI vii [♭] 0 ₄ | 12. i i [♭] ₄ _____ v |
| iv [♭] 8-7 ii [♭] ₅ | 13. i VI _____ v |
| vii [♭] 0 ₅ i6 | 14. i _____ iv i |
| iv vii [♭] 0 ₅ | 15. i VI _____ I |
| ii7 v | 16. I vi _____ I |
| ii7 ii [♭] ₅ | 17. I IV _____ v |
| vii [♭] 0 ₅ v [♭] ₃ | 18. I I6 _____ I |
| vii [♭] 7 I | 19. I _____ ii [♭] ₅ v |
| IV v [♭] ₃ | 20. I iii _____ I |
| ii [♭] 0 ₅ ii [♭] 7 | 21. i VI _____ V7 |
| iv7 ii [♭] ₅ | 22. i VI _____ v |
| vii [♭] 7 VI6 | 23. i _____ iv6 v |
| ii [♭] 7 ii [♭] ₅ | 24. i iv _____ v |
| III iv [♭] ₂ | 25. i _____ v [♭] ₃ i |

PART II: Dictation

1.

c: _____

2.

B[♭]: _____

3.

E: _____

4.

d: _____

ANSWERS TO PART II ON PAGE 84

LESSON 6

PART I: Identification of 7th chord sonorities. Choices: M7, V7, & m7 in root pos. & inversions, o7 & ø7 in root pos. only.

PART II: Completion. Major mode. Major 7th chords (I7, IV7) are featured, but any 7th chord may be found. Root position and inversions are present.

PART III: Completion. Minor mode. Major 7th chords (VI7, III7) are featured, but any 7th chord may be found. Root position and inversions are present.

| ANS. | | ANS. | |
|----------------|-----|----------------|-----|
| m7 | 1. | $m\frac{1}{3}$ | 25. |
| o7 | 2. | M7 | 26. |
| $V\frac{1}{2}$ | 3. | o7 | 27. |
| $M\frac{1}{2}$ | 4. | $M\frac{6}{5}$ | 28. |
| $V\frac{6}{5}$ | 5. | $m\frac{1}{2}$ | 29. |
| $V\frac{1}{2}$ | 6. | o7 | 30. |
| V7 | 7. | V7 | 31. |
| ø7 | 8. | $M\frac{1}{3}$ | 32. |
| M7 | 9. | M7 | 33. |
| $m\frac{1}{2}$ | 10. | M7 | 34. |
| $V\frac{1}{3}$ | 11. | ø7 | 35. |
| $m\frac{6}{5}$ | 12. | V7 | 36. |
| o7 | 13. | $V\frac{1}{2}$ | 37. |
| m7 | 14. | $m\frac{6}{5}$ | 38. |
| $V\frac{6}{5}$ | 15. | o7 | 39. |
| M7 | 16. | $M\frac{1}{2}$ | 40. |
| ø7 | 17. | V7 | 41. |
| $m\frac{1}{2}$ | 18. | ø7 | 42. |
| $m\frac{6}{5}$ | 19. | $M\frac{6}{5}$ | 43. |
| V7 | 20. | m7 | 44. |
| $m\frac{1}{3}$ | 21. | $m\frac{6}{5}$ | 45. |
| $V\frac{1}{3}$ | 22. | $M\frac{1}{2}$ | 46. |
| $M\frac{1}{2}$ | 23. | o7 | 47. |
| ø7 | 24. | V7 | 48. |

| ANS. | |
|------------------|--------------------------------|
| 11i7 | 1. I ____ IV V7 I |
| IV7 | 2. I ____ $ii\frac{6}{5}$ V7 I |
| I7 | 3. I ____ IV V I |
| IV7 | 4. I vi ____ V I |
| 1i7 | 5. I IV ____ V I |
| 1i7 | 6. I vi ____ V7 I |
| $vii\frac{6}{7}$ | 7. I ____ I IV7 V |
| $I\frac{1}{2}$ | 8. I ____ vi $ii\frac{6}{5}$ V |
| $IV\frac{1}{2}$ | 9. I I6 IV ____ $v\frac{1}{3}$ |
| 1i7 | 10. I I6 IV ____ V |
| $V\frac{6}{5}$ | 11. I ____ I $ii\frac{6}{5}$ V |
| I7 | 12. I ____ IV V7 I |
| IV7 | 13. I ____ $ii\frac{6}{5}$ V I |
| $IV\frac{1}{2}$ | 14. IV ____ $v\frac{1}{3}$ I V |
| $I\frac{1}{2}$ | 15. I ____ IV6 V7 I |

| ANS. | |
|------------------|----------------------------------|
| $ii\frac{6}{5}$ | 1. i VI ____ V i |
| $VI\frac{1}{2}$ | 2. i $i\frac{1}{2}$ VI ____ iv |
| $vii\frac{6}{3}$ | 3. iv7 ____ i6 $v\frac{6}{4}$ i |
| $ii\frac{6}{5}$ | 4. i i6 ____ V7 i |
| VI7 | 5. i ____ $ii\frac{6}{3}$ V7 i |
| III7 | 6. i ____ iv V i |
| $III\frac{1}{2}$ | 7. i III ____ VI6 $v\frac{6}{5}$ |
| V7 | 8. V6 ____ i iv i |
| VI7 | 9. i III ____ iv6 V |
| III7 | 10. i ____ VI iv I |

LESSON 7

| ANSWERS | PART I: Error detection |
|---|---|
| I IV IV 7 V7 I — <u>ii7</u> — | 1. I IV IV7 V7 I |
| I IV IV7 ii ⁶ ₅ V <u>vii</u> 7 — — | 2. I vi IV7 ii ⁶ ₅ V |
| I IV I ⁶ ₄ V I <u>ii⁶₅</u> — — | 3. I IV I ⁶ ₄ V I |
| I IV vi ii ⁶ ₅ V <u>I⁶₄</u> — — | 4. I ii ⁴ ₃ vi ii ⁶ ₅ V |
| I IV I6 IV V I — — <u>v⁴₂</u> — — | 5. I IV I6 vii ⁰ ₆ I |
| i iv IV V i — — <u>ii⁰₆</u> — — | 6. i iv iv7 V7 i |
| i IV 16 iv V <u>vii⁰₆</u> — — | 7. i ii ⁰ ₇ 16 iv V |
| i iv IV 16 V — — <u>v⁴₂</u> — — | 8. i iv ii ⁰ ₅ 16 V |
| i vi ⁶ ₅ v ⁶ ₅ i V <u>ii⁰₄</u> — — | 9. i VI6 v ⁶ ₅ i V |
| i IV 16 iv I <u>v⁴₂</u> — — | 10. i iv 16 iv I |

| ANSWERS | PART II (Continued) |
|--|---|
| I6 v ⁴ ₃ | 11. I v ⁴ ₂ — — — I |
| IV7 ii ⁶ ₅ | 12. I — — — V I |
| IV ⁶ ₄ v ⁶ ₅ | 13. I — — — I V |
| ii ⁶ ₅ V7 | 14. I I6 — — — I |
| ii7 vii ⁰ ₆ | 15. I IV — — — I |

PART III: Dictation

1.

F: — — — — —

2.

a: — — — — —

3.

Bb: — — — — —

4.

D: — — — — —

ANSWERS TO PART III ON PAGE 85

| ANSWERS | PART II: Completion |
|--|---|
| vii ⁰ ₅ I | 1. I I6 — — — V |
| ii ⁶ ₅ I ⁶ ₄ | 2. I — — — V7 I |
| v ⁴ ₂ I6 | 3. I — — — I V |
| I6 v ⁴ ₂ | 4. I — — — I6 V |
| ii ⁴ ₂ v ⁶ ₅ | 5. I — — — V7 I |
| V v ⁶ ₅ | 6. i i6 — — — i |
| v ⁶ ₅ V7 | 7. i iv ⁶ ₄ — — — i |
| v ⁴ ₃ i6 | 8. i — — — iv I |
| iv ii ⁰ ₅ | 9. i i6 — — — V |
| v ⁶ ₄ i6 | 10. i — — — iv i |

LESSON 8

| ANSWERS | PART I: Completion |
|--|-----------------------------|
| I $\frac{4}{2}$ vi i $\frac{6}{5}$ | 1. I _____ V |
| IV IV $\frac{6}{5}$ | 2. I _____ I |
| iii IV V $\frac{7}{5}$ | 3. I _____ I |
| V $\frac{4}{2}$ I $\frac{6}{5}$ IV | 4. I _____ I |
| vi V $\frac{6}{5}$ V $\frac{7}{5}$ | 5. I _____ I |
| i $\frac{4}{2}$ iv $\frac{6}{5}$ iv | 6. i _____ V |
| VI $\frac{7}{5}$ iv $\frac{7}{5}$ ii $\frac{6}{5}$ | 7. i _____ V $\frac{7}{5}$ |
| III VI ii $\frac{6}{5}$ | 8. i _____ V |
| i $\frac{6}{5}$ V $\frac{4}{2}$ i $\frac{6}{5}$ | 9. i _____ V |
| i V V $\frac{6}{5}$ | 10. i _____ i |
| V $\frac{4}{2}$ i $\frac{6}{5}$ IV | 11. I _____ V |
| vi $\frac{7}{5}$ IV V $\frac{7}{5}$ | 12. I _____ I |
| vii $\frac{6}{5}$ I $\frac{6}{5}$ I | 13. I _____ V $\frac{7}{5}$ |
| V $\frac{6}{5}$ I IV $\frac{6}{4}$ | 14. I _____ I |
| IV $\frac{7}{5}$ ii $\frac{6}{5}$ V $\frac{7}{5}$ | 15. I _____ I |
| ii $\frac{4}{2}$ V $\frac{6}{5}$ V $\frac{7}{5}$ | 16. i _____ i |
| iv $\frac{7}{5}$ ii $\frac{6}{5}$ V | 17. i _____ i |

| ANSWERS | PART I (Continued) |
|---|--------------------|
| ii $\frac{6}{5}$ vii $\frac{6}{5}$ V $\frac{4}{2}$ | 18. i _____ i |
| V VI ii $\frac{6}{5}$ | 19. i _____ V |
| V $\frac{6}{5}$ i $\frac{6}{4}$ V $\frac{7}{5}$ | 20. i _____ i |
| ii $\frac{6}{5}$ ii $\frac{7}{5}$ vii $\frac{6}{5}$ | 21. I _____ I |
| ii $\frac{6}{5}$ V $\frac{4}{2}$ I $\frac{6}{5}$ | 22. I _____ V |
| iii vi IV $\frac{7}{5}$ | 23. I _____ V |
| IV IV $\frac{4}{2}$ vii $\frac{6}{5}$ | 24. I _____ I |
| I $\frac{4}{2}$ vi IV | 25. I _____ I |

PART II: Dictation

1.

d: _____

E \flat : _____

ANSWERS TO PART II ON PAGE 85

LESSON 9

PART I: Error detection

1.

Bb: I 11⁶₅ I⁶₄ V7 I 11⁶₅ V

2.

f: i v⁶₅ VI6 VI iv7 vii^o₄ V

PART II: Dictation

1.

G: _____

2.

a: _____

3.

D: _____

UNIT V

LESSON 10

PART I: Error detection

1.

F: I V_3^4 I6 iii ii $_5^6$ V7 I

2.

c: i V_3^4 iii17 V_3^4 i iv $_5^6$ V

PART II: Dictation

1.

D: _____

2.

d: _____

3.

E: _____

LESSON 11

PART I: Error detection

1.

A: I I6 V V₂⁴ I6 ii₅⁶ V

2.

F: I vi7 ii₃⁴ V7 vi ii₅⁶ V7 I

PART II: Dictation

1.

d: _____

2.

c: _____

3.

G: _____

ANSWERS ON PAGE 84

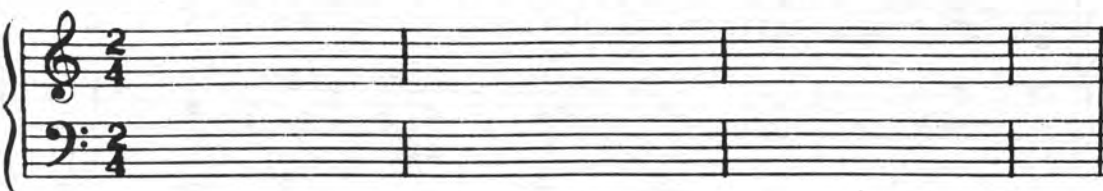
UNIT VI

LESSON 1

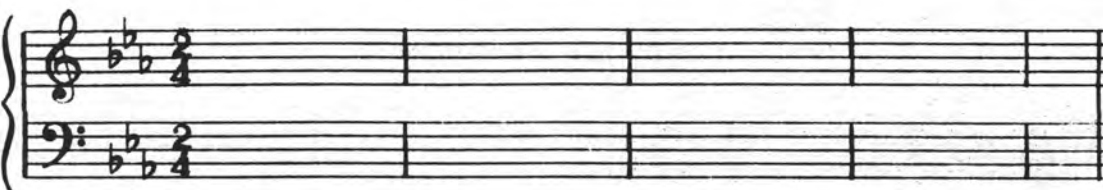
Each exercise consists of a seven-chord progression which begins in one key and ends in a closely related key. The beginning key is given. In the space provided, identify the ending key. Upper-case letters are used for Major keys and lower-case letters are used for Minor keys. Answers are at the bottom of the page.

| | | | | | | | | | | | | |
|-------------|---|---|---|---|---|---|---|---|---|----|----|----|
| EXERCISE: | 1 | 2 | 3 | 4 | 5 | 6 | 7 | 8 | 9 | 10 | 11 | 12 |
| FIRST KEY: | C | C | c | c | G | G | g | g | F | F | f | f |
| SECOND KEY: | | | | | | | | | | | | |

LESSON 2: Dictation of modulating phrases

1. 

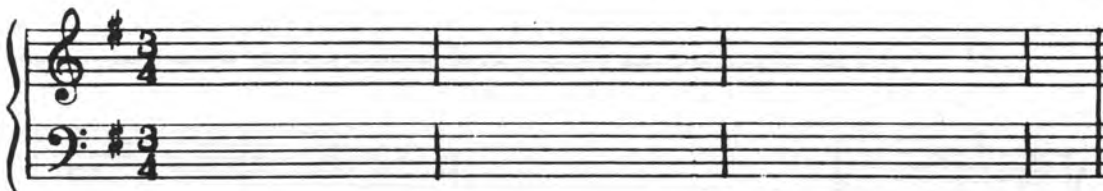
C: _____

2. 

E^b: _____

3. 

d: _____

4. 

e: _____

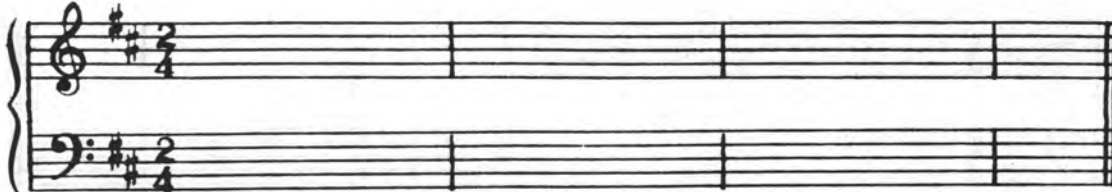
ANSWERS TO LESSON 2 ON PAGE 85

ANSWERS TO LESSON 1:

1. G; 2. e; 3. f; 4. E^b; 5. e; 6. C; 7. F; 8. d; 9. g; 10. B^b; 11. D^b; 12. b^b

LESSON 3

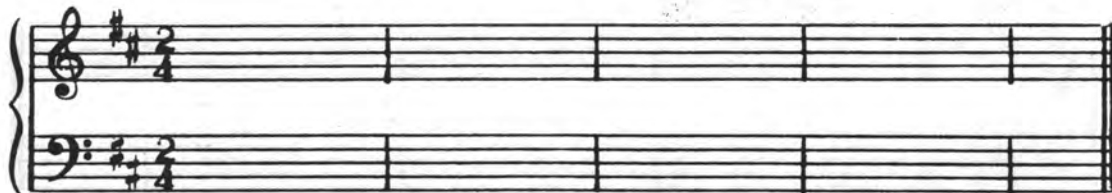
Dictation of modulating phrases

1. 

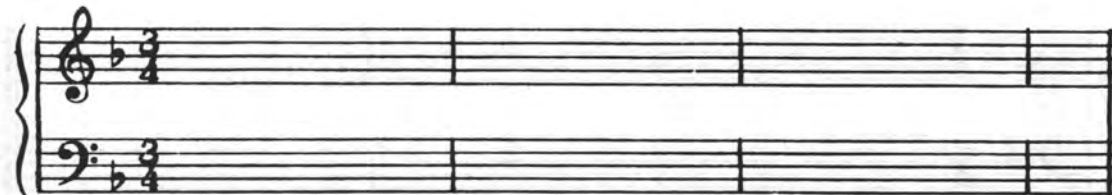
b: _____

2. 

f#: _____

3. 

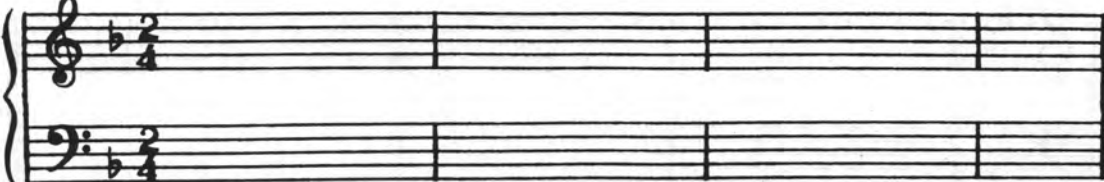
D: _____

4. 


F: _____

ANSWERS ON PAGE 85

Dictation of modulating phrases

1. 

F: _____

2. 

G: _____

3. 

F: _____

4. 

D: _____


ANSWERS ON PAGE 86

LESSON 5


Dictation of modulating phrases

1. 

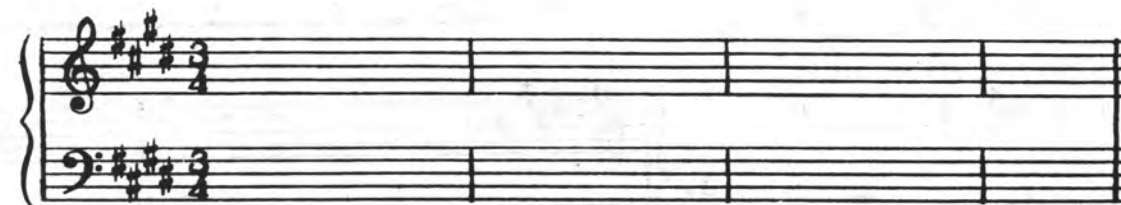
G: _____

2. 

d: _____

3. 

E^b: _____

4. 

F[#]: _____

ANSWERS ON PAGE 86

| ANSWERS | PART I: Multiple choice |
|--------------------------------|--|
| | Choices: V7/V or ii7 |
| ii7 | 1. I vi _____ V7 I |
| ii7 | 2. I IV _____ V7 I |
| V7/V | 3. I I6 _____ V I |
| | Choices: V7/V or ii [♭] 7 |
| ii [♭] 7 | 4. i III iv _____ V |
| V7/V | 5. i iv _____ V7 i |
| | Choices: V7/V or ii7 Root pos. or inversion |
| ii [♭] 5 | 6. I I6 _____ V7 I |
| V [♭] ₅ /V | 7. I6 _____ I [♭] ₄ V I |
| V [♭] ₃ /V | 8. V _____ V6 V7 I |
| V [♭] ₂ /V | 9. I I6 ii _____ V |
| ii [♭] ₅ | 10. I iii _____ V I |
| | Choices: V7/V or ii [♭] 7 Root pos. or inversion |
| ii [♭] ₅ | 11. i VI _____ V i |
| V [♭] ₅ /V | 12. i VI ii [♭] ₅ _____ V |
| V [♭] ₂ /V | 13. i iv [♭] ₄ i _____ V |
| V [♭] ₅ /V | 14. i iv _____ V7 i |
| V7/V | 15. i i6 _____ V i |

| ANSWERS | PART II: Completion |
|--|---|
| vi V7/V | 1. I I6 ii [♭] ₅ V _____ V |
| V [♭] ₅ /V V | 2. I iii IV _____ V7 I |
| ii [♭] 6 V7/V | 3. I IV V [♭] ₂ I6 _____ V |
| ii [♭] ₅ V | 4. I I6 _____ I IV6 V |
| V [♭] ₅ /V I [♭] ₄ | 5. I iii vi _____ V7 I |
| V [♭] ₅ /V V | 6. i VI ii [♭] ₅ _____ V7 i |
| i V [♭] ₂ /V | 7. i i6 vii [♭] 06 _____ V [♭] ₅ i |
| VI V [♭] ₃ /V | 8. i V [♭] ₃ i6 V _____ V7 |
| V [♭] ₃ /V V | 9. i V [♭] ₂ /V _____ i iv6 V |
| iv V [♭] ₅ /V | 10. i III _____ i [♭] ₄ V i |

PART III: Dictation

1.

d: _____

2.

A: _____

ANSWERS TO PART III ON PAGE 86

LESSON 2

PART I

Ex. 1: I I6 IV V I

Ex. 2: I V⁶/₅/IV IV V I

Multiple choice: I, I7 or V7/IV, (i, i7 or V7/iv in minor), root pos. or inv.

1. I vii^o6 _____ IV I

2. I _____ IV ii⁶/₅ V

3. i i6 _____ iv V

4. i _____ iv V7 i

Completion

5. I _____ V7 I

6. I _____ V7 I

7. i _____ ii⁶/₅ V

8. i _____ V7 i

Ex. 1: I vi ii V I

Ex. 2: I V7/ii ii V I

Multiple choice: vi or V7/ii, root pos. or inv.

9. I _____ ii ii6 V

10. I iii _____ ii6 V

11. I vi _____ ii6 V

12. I6 _____ ii V I

Completion

13. I _____ V7 I

14. vi _____ V I

15. I _____ ii V

16. I _____ V I

ANSWERS

V⁶/₅/IV

I7

V⁶/₅/iv

V7/iv

iii IV

V⁶/₅/IV IV

V⁴/₂/iv iv6

i6 iv

V⁶/₅/ii

vi

V⁴/₂/ii

V⁴/₃/ii

vi ii6

V⁴/₂/ii ii6

IV6 V7/ii

I6 IV

ANSWERS

V7/IV

ii⁶/₅

V7/ii

V⁶/₅/V

V⁴/₂/iv

V7/V

III

ii⁶/₅

I7

V⁴/₃/ii

V⁴/₃/V

IV

PART II: Completion

1. I _____ IV ii⁶/₅ V

2. I vi ii _____ V

3. I _____ ii6 V7 I

4. I I6 IV _____ V

5. i _____ iv6 ii⁶/₅ V

6. i _____ V7 i V

7. i _____ iv V i

8. i _____ i⁶/₄ v⁸ 7 I

9. I _____ IV ii⁶/₅ V

10. I I6 _____ ii6 V

11. I _____ I⁶/₄ V7 I

12. I V⁶/₅/IV _____ V I

PART III: Dictation

C: _____

LESSON 3

PART I

Ex. 1: I iii vi IV V

Ex. 2: I V7/vi vi IV V

Multiple choice: V7/vi or iii (V7/VI or III in Minor) root position or inversion.

1. I I6 _____ vi V

2. I _____ vi ii V

3. i _____ VI iv i

4. i _____ VI6 $V\frac{6}{5}/V$ i

Completion

5. I _____ IV I

6. I _____ ii V

7. i _____ V7 i

8. i _____ iv V

Ex. 1: VII III iv V7 i

Ex. 2: V7/III III iv V7 i

Multiple choice: V7/III or VII, root pos. or inv.

9. V _____ III VI iv

10. iv _____ III V i

Choices: V7/iii or vi, root position or inversion.

11. I _____ iii V I

12. V _____ iii IV V

Completion

13. i iv _____ V

14. i _____ $V\frac{4}{3}$ i

15. I _____ V7 I

16. I6 _____ IV I

ANSWERS

iii

$V\frac{4}{3}/vi$

$V\frac{4}{2}/V$

V7/iii

$ii\frac{6}{5}$

$V\frac{4}{2}/VI$

$V\frac{4}{2}/iv$

$vi\frac{6}{7}$

I6

V7/ii

V7/vi

$V\frac{6}{5}/V$

PART II: Completion

1. I _____ vi IV I

2. I _____ vi IV V

3. I _____ V6 $V\frac{4}{3}$ I

4. I vi _____ iii V7

5. i _____ $i\frac{6}{4}$ V7 i

6. i _____ VI6 $V\frac{6}{5}$ i

7. i _____ $iv6\ ii\frac{6}{3}$ V

8. i _____ i iv V

9. I _____ IV V I

10. I _____ $ii6$ V7 I

11. I _____ vi IV V

12. I I6 _____ V I

ANSWERS

V7/vi

iii

$V\frac{4}{3}/VI$

$V\frac{4}{2}/VI$

iii vi

$V\frac{4}{3}/vi$ vi

i6 iv

V7/VI VI

$V\frac{4}{3}/III$

$VII\frac{6}{4}$

vi

$V\frac{4}{3}/iii$

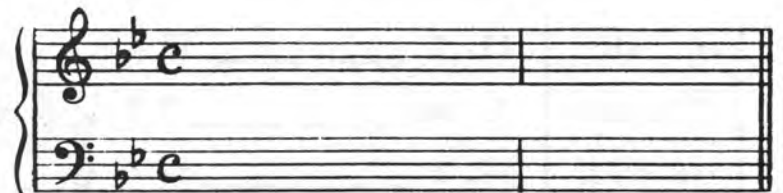
V7/III III

$V\frac{6}{5}/III$ III

iii IV

$V\frac{6}{5}/iii$ iii

PART III: Dictation



B^b: _____

ANSWERS TO PART III ON PAGE 86

LESSON 4

PART I: Completion

| ANSWERS |
|-------------------|
| V_5^6/vi vi |
| V_4^6/ii ii6 |
| V_3^4/IV IV |
| V_5^6/V V |
| V_5^6/IV IV |
| V_3^4/III III |
| V_5^6/V I_4^6 |
| V_2^4/VI VI6 |

1. I IV V _____ IV I
2. I vi ii _____ V I
3. I IV6 V _____ V I
4. I vi ii6 _____ V7 I
5. I V vi _____ V7 I
6. i iv _____ iv V i
7. i VI ii I_4^6 _____ V i
8. i III _____ VI iv6 V


| ANSWERS |
|-------------------|
| V_5^6/V V |
| V_5^6/iv iv |
| V_2^4/vi vi6 |
| V_5^6/V I_4^6 |
| V7/IV IV |
| V_5^6/ii ii |
| V_2^4/ii ii6 |

9. i iv _____ i iv6 V
10. i i6 _____ i_4^6 V7 i
11. I6 _____ ii V V7 I
12. I I6 IV _____ V7 I
13. I I6 vi I_4^6 _____ V I
14. I _____ ii6 I_4^6 V I
15. I vi V/ii _____ V7 I

PART II: Dictation

1. 

r#: _____

2. 

Bb: _____

ANSWERS TO PART II ON PAGE 86

LESSON 5

PART I: Completion

| ANSWERS | | ANSWERS | |
|----------------------------------|------------------------------------|-----------------------------------|--|
| $V\frac{4}{2}/ii$ ii | 1. I $I\frac{4}{2}$ vi _____ V I | $V\frac{4}{3}/III$ III | 9. i iv $ii\frac{6}{5}$ _____ iv V |
| ii6 $V7/vi$ | 2. I vi _____ vi IV V | $V\frac{6}{5}/iv$ iv | 10. i III _____ $ii\frac{6}{5}$ vi $ii\frac{6}{5}$ i |
| $ii\frac{6}{5}$ $V\frac{6}{5}/V$ | 3. I IV V7 vi _____ V | $V\frac{4}{3}/ii$ ii | 11. I iii IV _____ $V7/V$ V |
| $V\frac{6}{5}/iii$ iii | 4. I I6 _____ IV $V\frac{4}{3}$ I | $V\frac{6}{5}/V$ V | 12. I vi IV _____ V7 I |
| $V\frac{4}{2}/V$ V6 | 5. I IV ii _____ $V\frac{6}{5}$ I | $V\frac{4}{2}/vi$ vi6 | 13. I iii _____ ii V7 I |
| $V\frac{4}{3}/iv$ iv | 6. i VI _____ $i\frac{6}{4}$ V7 i | $V\frac{4}{2}/ii$ $ii\frac{6}{5}$ | 14. I IV V7 _____ V7 I |
| $V\frac{6}{5}/VI$ VI | 7. i iv6 V _____ $ii\frac{6}{5}$ V | IV7 $ii\frac{6}{5}$ | 15. I vi7 _____ $i\frac{6}{4}$ V7 I |
| $ii\frac{6}{5}$ $V\frac{6}{5}/V$ | 8. i iv _____ V V7 i | | |

PART II: Dictation

1.

B^b: _____

2.

f: _____

ANSWERS TO PART II ON PAGE 87

LESSON 6

PART I: Error detection.
The underlined chord may be:
a. correct as written
b. secondary dominant
c. secondary leading tone seventh chord ($\phi 7$ or $o7$).

ANSWERS

PART II: Completion

| ANSWERS |
|---------------------------|
| $\phi 7$ |
| $\phi 7$ |
| $\phi 7$ |
| $i i \overset{6}{5}$ |
| $o7$ |
| $\phi 7$ |
| $V \overset{6}{5} / VI$ |
| $i i \overset{\phi 4}{2}$ |
| $o7$ |
| $V7 / iv$ |
| $V \overset{4}{3} / i i$ |
| $V \overset{6}{5} / IV$ |
| $o7$ |
| $o7$ |
| $\phi 7$ |

- I I7 ii V7 I
- I IV $i i \overset{6}{5}$ V I
- I V $v i \overset{4}{3}$ IV I
- I I6 IV $i i \overset{6}{5}$ V
- V $V \overset{6}{5}$ vi IV V
- i $i i \overset{\phi 6}{5}$ III iv i
- i $III \overset{6}{5}$ VI $i i \overset{\phi 6}{5}$ V
- i $i i \overset{\phi 4}{2}$ $V \overset{6}{5}$ i V
- i i6 $i i \overset{\phi 6}{5}$ $iv \overset{4}{3}$ V
- i $VI \overset{6}{5}$ $iv \overset{6}{4}$ i V
- I IV $i i i 7$ ii V
- I $I \overset{6}{5}$ IV $i i \overset{6}{5}$ V
- I $v i 6$ ii V I
- I V $V \overset{6}{5}$ vi V6
- I $i i \overset{4}{3}$ V6 $V \overset{6}{5}$ I

- | ANSWERS |
|--|
| $i i \overset{6}{5}$ $V \overset{6}{5} / V$ $I \overset{6}{4}$ |
| $o7$ $v i 6$ IV |
| $V \overset{4}{3} / i i$ ii $V \overset{4}{2} / V$ |
| ii $o7$ iii |
| V $o7$ vi |
| $\phi 7$ VII III |
| $o7$ iv i |
| V $V \overset{6}{5} / VI$ VI |
| $o7$ iv i |
| $iv 7$ $o7$ $i \overset{6}{4}$ |
| $o7$ ii6 $i \overset{6}{4}$ |
| iii $V \overset{4}{2} / vi$ vi6 |
| $V \overset{6}{5} / vi$ vi IV |
| $\phi 7$ V vi |
| V $\phi 7$ IV |

- I I6 _____ V7 I
- I iii _____ ii V
- I IV _____ V6 I
- I vi _____ V7 I
- I I6 _____ $V \overset{6}{5} / V$ V
- i VI _____ iv V
- i III _____ $iv \overset{6}{4}$ V6
- i iv _____ iv V
- i VI _____ $iv 6$ V
- i i6 _____ V7 i
- I I6 _____ V7 I
- I I6 _____ ii V
- I vi _____ ii7 V
- I IV _____ IV I
- I IV _____ V7 I

LESSON 7

| ANSWERS | | |
|-------------------|-------------------|-------------------|
| IV | o7 | ii |
| IV | $V\frac{1}{3}/V$ | $V\frac{6}{4}$ |
| $V7/vi$ | vi | $ii\frac{6}{5}$ |
| IV | I | o7 |
| $V\frac{6}{5}/IV$ | IV | $I\frac{6}{4}$ |
| o7 | iv | V |
| III6 | $\phi 7$ | VI |
| $vii\frac{6}{5}$ | i | $v\frac{4}{2}/iv$ |
| iv | $V\frac{6}{5}/V$ | $i\frac{6}{4}$ |
| $ii\frac{6}{5}$ | o7 | $i\frac{6}{4}$ |
| IV | $V\frac{1}{3}/ii$ | ii |
| V | o7 | vi |
| ii | $V7/V$ | V |
| $V\frac{1}{3}/IV$ | IV | $I\frac{6}{4}$ |
| $V\frac{6}{5}/V$ | V | vi |

PART I: Completion

1. I vi _____ $ii\frac{6}{5}$ V
2. I iii _____ V7 I
3. vi _____ V7 I
4. I I6 _____ ii V
5. I I6 _____ V I
6. i i6 _____ V7 i
7. i III _____
8. i i6 _____ $iv\frac{6}{5}$ V
9. i i6 _____ V i
10. i i6 _____ V i
11. I iii _____ $ii\frac{6}{5}$ V
12. I IV _____ $ii\frac{6}{5}$ V
13. I IV _____ V7 I
14. I vi _____ V I
15. I vi _____ IV I

PART II: Dictation

1.

B^b: _____

2.

d: _____

ANSWERS TO PART II ON PAGE 87

LESSON 8

PART I: Error detection

1.

D: I vi11°6 I6 i16 V⁶/₅/V V I

2.

a: i III7 VI o7 V V7 i

PART II: Dictation

1.

F: _____

2.

b: _____

3.

E^b: _____

LESSON 9
PART I: Error detection

1.

G: I V6 IV6 $V\frac{4}{3}/IV$ IV $V\frac{7}{4} 3$ I

2.

a: i V7/III III $vii^{\flat}_{3/4}$ $V\frac{6}{5}/V$ V7 i

PART II: Dictation

1.

F: _____

2.

e: _____

3.

C: _____

LESSON 1

PART I: Multiple choice.

Choices: $i\overset{\flat}{i}6$, $i\overset{\flat}{i}\overset{\circ}{6}$,
 $i\overset{\flat}{i}\overset{\circ}{5}$, $i\overset{\flat}{i}\overset{\circ}{5}$

| ANSWERS |
|---|
| $i\overset{\flat}{i}\overset{\circ}{5}$ |
| $i\overset{\flat}{i}\overset{\circ}{5}$ |
| $i\overset{\circ}{6}$ |
| $i\overset{\flat}{i}6$ |
| |
| iv |
| IV |
| $IV6$ |
| $iv6$ |
| |
| iv |
| $i\overset{\flat}{i}\overset{\circ}{5}$ |
| IV |
| $i\overset{\flat}{i}\overset{\circ}{5}$ |
| $iv6$ |

- I _____ V7 I
- I _____ V I
- I _____ V7 I
- I _____ V7 I

Choices: IV , iv ,
 $IV6$, $iv6$

- I _____ V7 I
- I _____ v^8 7 I
- I _____ v^6 ₅ I
- I _____ V7 I

Choices: IV , iv , $IV6$, $iv6$
 $i\overset{\flat}{i}\overset{\circ}{5}$, $i\overset{\flat}{i}\overset{\circ}{5}$

- I _____ $i\overset{\flat}{i}\overset{\circ}{5}$ V
- I _____ V I
- I _____ $i\overset{\flat}{i}7$ V
- I _____ $i\overset{\flat}{i}\overset{\circ}{7}$ V
- I _____ iv I

PART II: Completion

| ANSWERS |
|---|
| $I6$ iv |
| $IV7$ $i\overset{\flat}{i}\overset{\circ}{5}$ |
| $i\overset{\flat}{i}\overset{\circ}{5}$ I^6 ₄ |
| iv $I6$ |
| $vi7$ $i\overset{\flat}{i}\overset{\circ}{5}$ |
| $i\overset{\flat}{i}\overset{\circ}{4}$ ₂ v^6 ₅ |
| $IV6$ $iv6$ |
| $i\overset{\flat}{i}\overset{\circ}{5}$ $vii^{\circ}4$ ₃ |
| $vii^{\circ}6$ ₅ $I6$ |
| $i\overset{\flat}{i}\overset{\circ}{4}$ ₂ v^6 ₅ |
| $iv6$ iv |
| $i\overset{\flat}{i}\overset{\circ}{5}$ $i\overset{\flat}{i}\overset{\circ}{5}$ |
| $i\overset{\flat}{i}\overset{\circ}{5}$ $i\overset{\flat}{i}\overset{\circ}{7}$ |
| $vii^{\circ}6$ ₅ $I6$ |
| $vi7$ $i\overset{\flat}{i}\overset{\circ}{4}$ ₃ |

- I _____ V7 I
- I _____ V I
- I _____ V7 I
- I _____ v^4 ₃ I
- I _____ V I
- I _____ I V
- I _____ V7 I
- I _____ v^8 7 I
- I _____ v^4 ₃ I
- I _____ V7 I
- I _____ V7 I
- I _____ V I
- I _____ v^4 ₃ I
- I _____ iv V
- I _____ V7 I

PART III: Dictation

D: _____

ANSWERS TO PART III ON PAGE 87

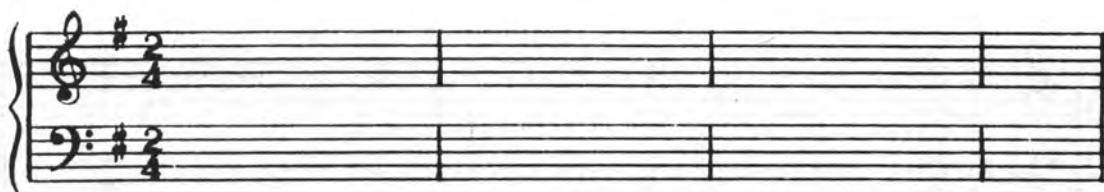
LESSON 2

PART I: Multiple choice.

PART II: Completion

| ANSWERS | Choices: vi, VI | ANSWERS | |
|---------|--|---|---|
| vi | 1. I _____ IV I | V VI | 1. I _____ iv V |
| VI | 2. I _____ III V7 | III VI | 2. I _____ iv I |
| vi | 3. I _____ ii ⁶ ₅ V | VI III | 3. I _____ iv I |
| VI | 4. I _____ iv V | III iv | 4. I _____ I V |
| | Choices: iii, III | I6 ii ⁶ ₅ | 5. I _____ V I |
| III | 5. I _____ iv I | III iv | 6. I _____ V I |
| iii | 6. I _____ V I | VI iv6 | 7. I _____ ii ⁶ ₃ V |
| III | 7. I _____ V7 I | III VI | 8. I _____ iv7 V |
| iii | 8. I _____ IV I | vi ¹⁰ ₅ v ⁴ ₃ | 9. I _____ I6 V |
| | Choices: vi, VI, iii, III | V VI | 10. I _____ iv I |
| VI | 9. I _____ iv V | III v ⁴ ₃ | 11. I _____ I V |
| iii | 10. I _____ V7 I | iii vi ¹⁰ ₅ | 12. I _____ I V |
| III | 11. I _____ iv I | vi ii ⁶ ₅ | 13. I _____ v ⁸ 7 I |
| vi | 12. I _____ IV6 V7 | VI iv7 | 14. I _____ ii ⁶ ₅ V |
| VI | 13. I _____ iv I | VI III | 15. I _____ V I |

PART III: Dictation



G: _____

ANSWERS TO PART III ON PAGE 87

LESSON 3

PART I: Error detection

1.

B \flat : I ii i \sharp \flat ₅ V7 vi iv I

2.

D: I IV \flat ₄ V \flat ₅ V vi ii \flat V

PART: Dictation

1.

G: _____

2.

F: _____

3.

A: _____

LESSON 5

PART I: Error detection

| ANSWERS | | PART I: Error detection | |
|--|---|---|---------------|
| I V VI IV V | 1. I V vi IV I | I6 iv vii ⁰⁶ | 4. I _____ I |
| <u>VI iv</u> | | VI iv v ⁶ /V | 5. I _____ V |
| I III IV v ⁶ /V V | 2. I iii IV v ⁶ /V V | v ⁴ /VI VI iv | 6. I _____ I |
| <u>v⁶/iv iv</u> | | III v ⁴ I | 7. I _____ V |
| I VI I6 IV V | 3. I vii ⁰⁶ I6 IV V | iv ⁶ iv V | 8. I _____ I |
| <u>v⁴ iv</u> | | VI III v7 | 9. I _____ I |
| I IV ⁶ III vii ⁰⁷ I | 4. I IV ⁶ iii ⁴ vii ⁰⁷ I | I6 iii ⁶ 07 | 10. I _____ V |
| <u>iv⁶ iii⁴</u> | | iii IV iv | 11. I _____ I |
| I v ⁶ /ii III iii ⁶ V | 5. I v ⁶ /ii ii iii ⁶ V | v7/vi vi iii ⁶ | 12. I _____ V |
| <u>iii⁶</u> | | V vi iv | 13. I _____ I |
| I v ⁴ /VI VI v7 I | 6. I v ⁴ /VI VI v7 I | iii ⁴ vii ⁰⁷ v ⁶ | 14. I _____ I |
| <u>v⁴/iv iv</u> | | VI iii ⁶ v ⁶ /V | 15. I _____ V |
| I VI iv v ⁶ /V V | 7. I VI iv v ⁶ /V V | I6 iv iii ⁶ | 16. I _____ V |
| <u>vi 07</u> | | III v ⁶ /iv iv | 17. I _____ I |
| I IV7 iii ⁶ iii ⁶ V | 8. I IV7 iii ⁶ iii ⁶ V | VI v ⁶ /V V | 18. I _____ I |
| <u>(No errors)</u> | | iv iii ⁶ vii ⁰⁴ | 19. I _____ V |
| I VI I6 IV I | 9. I vii ⁰⁶ i6 v7 I | iii ⁶ I ⁶ v7 | 20. I _____ I |
| <u>v⁶/III III</u> | | | |
| I IV I6 IV I | 10. I IV I6 IV I | | |
| <u>v⁴ iv</u> | | | |
| ANSWERS | PART II: Completion | | |
| iii ⁶ vii ⁰⁴ v ⁸ 7 | 1. I _____ I | | |
| v ⁴ /vi vi iv ⁶ | 2. I _____ v7 | | |
| v I6 iii ⁶ | 3. I _____ v | | |

PART I: Error detection

1.

C: I vii^o₅ I⁶ o⁷ ii V⁶₅/V V

2.

A: I IV⁶₄ I iii vi V⁶₅/V V

PART II: Dictation

E^b: _____

F: _____

G: _____

LESSON 7
PART I: Error detection

1.

G: I V^6_5 vi6 $V7/iv$ iv V7 I

2.

C: I ii 4_2 V^6_5 I ii 6_5 V^6/V V

PART II: Dictation

1.

A: _____

2.

E: _____

3.

D: _____

UNIT VIII

LESSON 8

PART I: Error detection

1.

G: I IV₄ I VI ii₅⁶ V⁸ 7 I

2.

E: I I₂ IV6 ii₅⁶ V₂/V V⁸ 7 I

PART II: Dictation

1.

A: _____

2.

F: _____

3.

E^b: _____

LESSON 1

| ANSWERS | PART I: Multiple choice |
|------------------------------|---|
| | Choices: iv6, ii [♭] ₄ , Gr [♭] ₅ |
| Gr [♭] ₅ | 1. i _____ V i |
| ii [♭] ₄ | 2. i _____ V7 i |
| iv6 | 3. i _____ i [♭] ₄ V7 i |
| Gr [♭] ₅ | 4. i _____ i [♭] ₄ V7 i |
| | Choices: VI, ii [♭] ₄ , Fr [♭] ₃ |
| VI | 5. i _____ i [♭] ₄ V |
| Fr [♭] ₃ | 6. i _____ V [♭] ₄ -3 i |
| ii [♭] ₄ | 7. i _____ i [♭] ₄ V7 i |
| Fr [♭] ₃ | 8. i _____ i [♭] ₄ V7 i |
| | Choices: Gr [♭] ₅ , Fr [♭] ₃ |
| Gr [♭] ₅ | 9. i VI _____ V i |
| Gr [♭] ₅ | 10. i iv6 _____ V [♭] ₈ 7 i |
| Gr [♭] ₅ | 11. i iv [♭] ₅ _____ V i |
| Fr [♭] ₃ | 12. i i [♭] ₂ _____ V [♭] ₄ 3 i |
| Gr [♭] ₅ | 13. i iv6 _____ V i |
| Fr [♭] ₃ | 14. i VI _____ V [♭] ₈ 7 i |
| Fr [♭] ₃ | 15. I ii [♭] ₃ _____ V I |
| Gr [♭] ₅ | 16. I IV6 _____ V I |
| Gr [♭] ₅ | 17. I _____ I [♭] ₄ V7 I |
| Fr [♭] ₃ | 18. I V _____ V I |

| ANSWERS | PART II: Completion |
|---|---|
| VI Gr [♭] ₅ | 1. i _____ V i |
| iv6 Gr [♭] ₅ | 2. i _____ i [♭] ₄ V |
| ii [♭] ₄ Fr [♭] ₃ | 3. i _____ V i |
| V [♭] ₅ /iv iv | 4. i _____ Gr [♭] ₅ V |
| i [♭] ₂ Fr [♭] ₃ | 5. i _____ V i |
| VI Gr [♭] ₅ | 6. i _____ V i |
| IV6 Gr [♭] ₅ | 7. I _____ I [♭] ₄ V |
| vi Fr [♭] ₃ | 8. I _____ V7 I |
| IV7 ii [♭] ₅ | 9. I _____ V I |
| IV6 Gr [♭] ₅ | 10. I _____ I [♭] ₄ V |

PART III: Dictation

1.

d: _____

2.

A: _____

UNIT IX

LESSON 2

ANSWERS
 vii^o₄
 N6
 N6
 ii^o₅
 N6
 N6
 Gr^o₅
 Fr^o₄
 N6
 Fr^o₄
 Gr^o₅
 N6
 Gr^o₅
 N6
 N6
 N6
 Gr^o₅

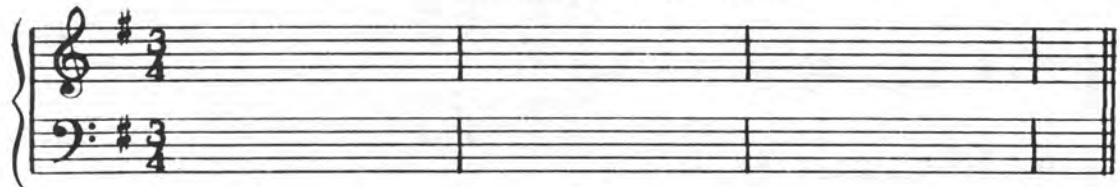
PART I: Multiple choice
 Choices: ii^o₅, vii^o₄, N6
 1. i _____ V i
 2. i _____ V7 i
 3. i _____ i⁶₄ V i
 4. i _____ i6 V^o 7 i
 Choices: Gr^o₅, Fr^o₄, N6
 5. i VI _____ V7 i
 6. i ii^o₅ _____ i⁶₄ V
 7. i VI7 _____ V i
 8. i ii^o₅ _____ V i
 9. i iv _____ V i
 10. I ii⁴₃ _____ V I
 11. I IV6 _____ V I
 12. I ii⁶₅ _____ I⁶₄ V
 13. I ii⁴₃ _____ V I
 14. I IV _____ V7 I
 15. i iv _____ V7 i
 16. i i6 _____ V7 i
 17. i i⁴₂ _____ V i

ANSWERS
 Fr^o₄
 Fr^o₄
 V7/i Fr^o₄
 iv6 Gr^o₅
 V⁴₃/V Fr^o₄
 V⁶₅/IV N6
 V⁴₂/iv Gr^o₅
 iv7 Fr^o₄
 ii^o₅ N6
 o7 N6
 VI Gr^o₅
 ii^o₄ Fr^o₄

PART I (Continued)
 18. i iv6 _____ V i
 19. i ii^o₅ _____ V^o 7 i

PART II: Completion
 1. I _____ I⁶₄ V
 2. I _____ V I
 3. I _____ V I
 4. I _____ I⁶₄ V
 5. i _____ i⁶₄ V
 6. i _____ V i
 7. i _____ V7 i
 8. i _____ V7 i
 9. i _____ i⁶₄ V
 10. i _____ V i

PART III: Dictation



G: _____

LESSON 3

PART I: Completion

| ANSWERS | | | | ANSWERS | | | |
|------------------|------------------|-------|-------|-----------------|---|---------------------|------------------|
| V | Gr $\frac{6}{5}$ | 1. i | _____ | V | i | V $\frac{4}{3}$ /V | Fr $\frac{6}{3}$ |
| VI | N6 | 2. i | _____ | V7 | i | iv | Gr $\frac{6}{5}$ |
| iv6 | Fr $\frac{6}{3}$ | 3. i | _____ | i $\frac{6}{4}$ | V | ii $\frac{6}{5}$ | N6 |
| iv | Fr $\frac{6}{3}$ | 4. i | _____ | V | i | iv7 | N6 |
| ii $\frac{6}{5}$ | N6 | 5. i | _____ | V 8 7 | i | iv6 | Gr $\frac{6}{5}$ |
| i $\frac{4}{2}$ | Gr $\frac{6}{5}$ | 6. i | _____ | i $\frac{6}{4}$ | V | IV | N6 |
| iv | N6 | 7. i | _____ | V7 | i | V $\frac{4}{2}$ /IV | Gr $\frac{6}{5}$ |
| ii $\frac{6}{5}$ | Gr $\frac{6}{5}$ | 8. i | _____ | i $\frac{6}{4}$ | V | ii $\frac{6}{5}$ | N6 |
| VI | Fr $\frac{6}{3}$ | 9. i | _____ | V | i | ii $\frac{6}{4}$ | Fr $\frac{6}{3}$ |
| VI | N6 | 10. i | _____ | V7 | i | vi | Fr $\frac{6}{3}$ |
| | | | | | | 11. i | _____ |
| | | | | | | i $\frac{6}{4}$ | V |
| | | | | | | 12. i | _____ |
| | | | | | | V 8 7 | i |
| | | | | | | 13. i | _____ |
| | | | | | | V | i |
| | | | | | | 14. i | _____ |
| | | | | | | V7 | i |
| | | | | | | 15. i | _____ |
| | | | | | | i $\frac{6}{4}$ | V |
| | | | | | | 16. I | _____ |
| | | | | | | V | I |
| | | | | | | 17. I | _____ |
| | | | | | | I $\frac{6}{4}$ | V |
| | | | | | | 18. I | _____ |
| | | | | | | I $\frac{6}{4}$ | V |
| | | | | | | 19. I | _____ |
| | | | | | | I $\frac{6}{4}$ | V |
| | | | | | | 20. I | _____ |
| | | | | | | V | I |

PART II: Dictation

1.

D: _____

2.

g: _____

ANSWERS TO PART II ON PAGE 88

LESSON 4

PART I: Completion

| ANSWERS | |
|--|--|
| iv6 Gr [♭] ₅ | 1. i _____ V i |
| iv7 N6 | 2. i _____ I [♭] ₄ V |
| V [♯] ₃ /V Fr [♭] ₃ | 3. i _____ V i |
| VI N6 | 4. i _____ i [♭] ₄ V |
| V [♯] ₂ /iv Gr [♭] ₅ | 5. i _____ V i |
| i6 N6 | 6. i _____ V7 i |
| ii [♯] ₃ Fr [♭] ₃ | 7. i _____ V i |
| V It [♭] | 8. i _____ i [♭] ₄ V |
| VI It [♭] | 9. i _____ V i |
| iv N6 | 10. i _____ V7 i |

| ANSWERS | |
|--|--|
| VI Gr [♭] ₅ | 11. i _____ v [♯] 7 i |
| iv6 Fr [♭] ₃ | 12. i _____ i [♭] ₄ V |
| ii [♯] ₅ N6 | 13. i _____ V7 i |
| iv N6 | 14. i _____ i [♭] ₄ V |
| i [♯] ₂ iv6 | 15. i _____ Gr [♭] ₅ V |
| vi Fr [♭] ₃ | 16. I _____ V I |
| IV6 N6 | 17. I _____ I [♭] ₄ V |
| V [♯] ₂ /IV Gr [♭] ₅ | 18. I _____ V I |
| I6 N6 | 19. I _____ I [♭] ₄ V |
| VI Gr [♭] ₅ | 20. I _____ V I |

PART II: Dictation

1. 

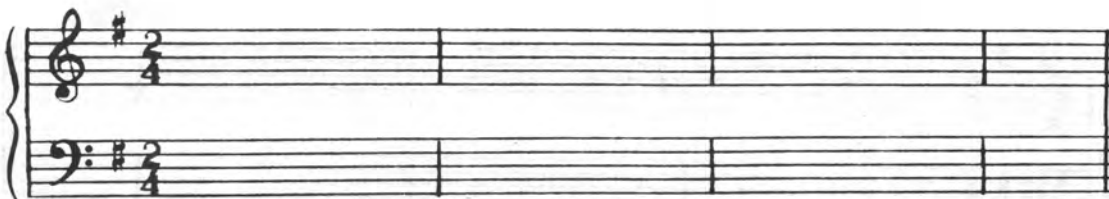
c: _____

2. 

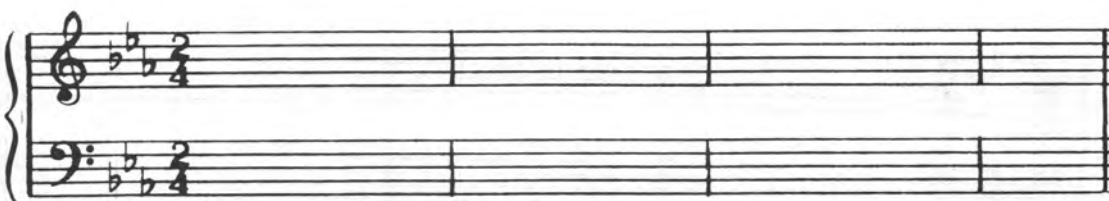
d: _____

LESSON 5


Dictation

1. 

G: _____

2. 

c: _____

3. 

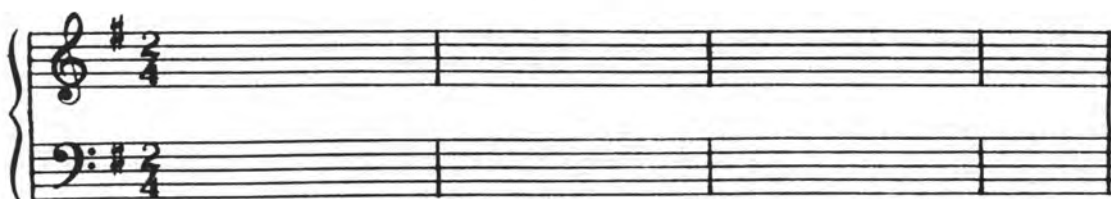
G: _____

4. 

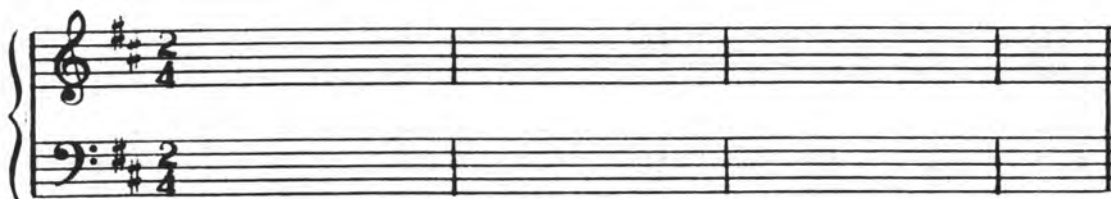
f: _____

ANSWERS ON PAGE 89

Dictation

1. 

e: _____

2. 

D: _____

3. 

F: _____

4. 

d: _____

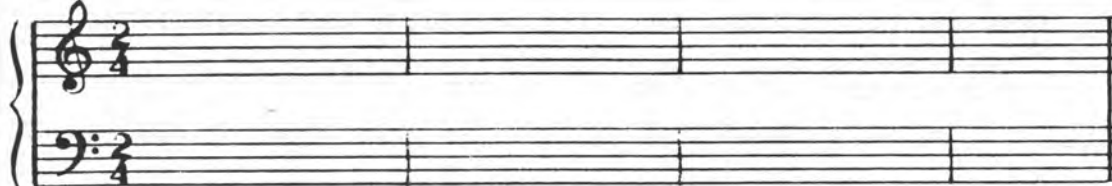
ANSWERS ON PAGE 89

LESSON 7


Dictation

1. 

B^b: _____

2. 

a: _____

3. 

D: _____


4. 

E^b: _____

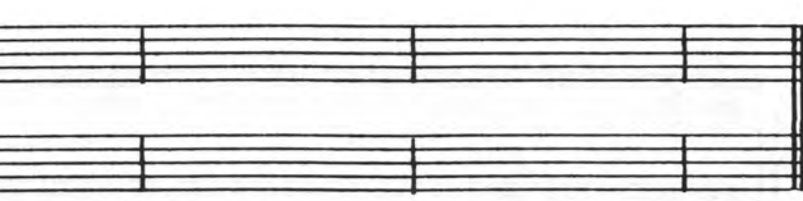
ANSWERS ON PAGE 89

LESSON 8


Dictation

1. 

d: _____

2. 

B^b: _____

3. 

f: _____

4. 

G: _____

ANSWERS ON PAGE 89

UNIT II, LESSON 3

1.

2.

3.

4.

5.

6.

UNIT II, LESSON 6

1.

2.

3.

4.

5.

6.

UNIT II, Lesson 8

1.

2.

3.

4.

5.

6.

UNIT III, LESSON 2

II, 1
 Fb: I (iii) IV I6 (ii6) V I

II, 2
 G: I (i6) V (VI) iv (ii6) V

III, 1
 D: I IV vi106 I6 IV V I

III, 2
 B: I VI ii6 V V6 I V

UNIT III, Lesson 3

II, 1
 A: I (ii6) V vi (IV6) (IV) I

II, 2
 a: I (III) (iv) i6 (vi106) i V

III, 1
 Eb: I I6 IV ii6 ii V6 I

III, 2
 C: I iv ii6 V i6 ii6 V

UNIT III, Lesson 4

I, 1
 G: I vi (IV) I6 (ii6) (vi106) I

I, 2
 B: I (ii6) V i6 (i) V6 i

II, 1
 F: I vi106 I6 IV ii6 ii V

II, 2
 G: I (III) VI iv6 ii6 V I

II, 3
 Eb: I V vi ii5 V V6 I

UNIT III, Lesson 8

I, 1
 G: I (I6) IV (ii6) I6 V I

I, 2
 B: I (i6) V (VI) iv iv6 V

II, 1
 F: I (iii) IV I (v6) I6 V

II, 2
 G: I (ii6) i6 V (VI) iv V

II, 3
 A: I IV6 V6 V I6 V6 I

UNIT III, LESSON 6

II, 1

Bb: I v_4^6 I6 ii_6 I_4^6 V I

II, 2

III, 1

G: i iv_4^6 V6 i vi_4^6 I6 V

III, 2

D: I V vi ii_6 I_4^6 V I

b: i iv I6 v_4^6 i ii_6 V

UNIT III, LESSON 7

II, 1

A: I I6 IV iv_4^6 I ii_6 V

II, 2

III, 1

a: i iv ii_6 vi_4^6 i_4^6 V i

III, 2

Eb: I ii_6 I_4^6 V vi IV I

c: i III VI iv I6 v_4^6 i

UNIT IV, LESSON 7

I, 1

F: I iii IV ii_6 V V6 I

I, 2

c: i iv ii_6 V6 i iv_6 V

II, 1

G: I vi IV I6 v_4^6 I V

II, 2

d: i vi_4^6 I6 iv I6 i VI iv V

II, 3

D: I I6 IV V I iv_4^6 I

UNIT IV, LESSON 8

I, 1

A: I IV I_4^6 V vi IV I

I, 2

g: i iv_6 iv ii_6 i_4^6 V i

II, 1

e: V i iv_4^6 i ii_6 i_4^6 V i

II, 2

Bb: I iii vi ii_6 ii_6 V I

II, 3

D: I v_4^6 I6 IV I6 I IV V I

UNIT IV, LESSON 5, PART II

2.

F: I IV₄ V₆ V I f: i V VI iv₆ V

D: I I6 V₄ I V d: i iv₆ i₄ V i

UNIT V, LESSON 3, PART II

1. 2.

C: I V I6 ii₆ V b: i iv iv_{1/2} V₃ i

3. 4.

G: I V V_{1/2} I6 V e: i i_{1/2} iv₆ V₇ i

UNIT IV, LESSON 6, PART II

1.

C: I V₆ I6 IV I c: i VI iv ii₆ V

3. 4.

G: i III VI ii₆ V G: I I6 I₆ V I

UNIT V, LESSON 5, PART II

1.

c: i ii₆ vii₆ V₆ i B \flat : I IV vii₆ I6 V

3. 4.

E: V V₆ I ii₆ V d: i ii₆ V₆ V i

UNIT V, LESSON 10

I, 1

F: I V₃ I6 ii₁₁ ii₁₆ V₇ I

I, 2

c: i i₆ iv_{1/2} V₃ i ii_{6/3} V

II, 1

D: I iii IV IV_{1/2} ii₇ V₆ I

II, 2

d: i iv i₆ vii₆ i iv₆ ii_{6/2} V₆ I

II, 3

E: I IV V_{1/2} I6 V₃ I ii_{1/2} V₆ V₇ I

UNIT V, LESSON 11

I, 1

A: I ii₁₁₇ V V_{1/2} I6 IV V

I, 2

F: I i_{1/2} ii_{1/3} V₇ vi IV V₇ I

II, 1

d: i iv ii_{6/7} V₆ i i_{1/2} iv₆ ii_{6/5} V

II, 2

c: i V₃ i₆ iv iv₆ vii_{6/2} i₆ i₆ V₇ i

II, 3

G: V₆ I vi₇ ii V₇ vi IV₇ ii₆ V I

UNIT V, LESSON 7, PART II

1. 2.

F: I V vi IV7 V a: i III VI7 iv7 V

3. 4.

B^b: I I IV7 ii⁶ V D: I IV7 ii⁶ V7 I

UNIT V, LESSON 8, PART II

1. 2.

d: I 16 V V₂ 16 ii⁶ V

B^b: v⁶⁻⁷ I vi IV7 ii⁶ I₄ V7 I

UNIT V, LESSON 9

I, 1 1.

B^b: I ii⁶ I₄ V7 vi IV7 V

I, 2 2.

f: i v⁶ i VI iv7 ii⁶ V

II, 1 1.

G: I vi IV V₂ I₆ I ii⁶ V I

II, 2 2.

a: i 1^{1/2} VI iv7 ii⁶ V₂ 16 iv iv6 V

II, 3 3.

D: I V₃ I₆ IV IV7 V₂ I₆ I₄ V7 I

UNIT VI, LESSON 2

1. 1.

C: I IV I₆ ii⁶ I₄ V7 I

2. 2.

B^b: I I₆ ii⁷ V I IV ii⁶ V i

3. 3.

d: i iv i VI iv iv⁶ i₄ V7 i

4. 4.

e: i V VI G: iv V₄ I₆ I ii⁶ V I

UNIT VI, LESSON 3

1. 1.

b: I III iv G: vi IV₆ I₄ V7 I

2. 2.

f[#]: V i iv V V₂ 16 E: ii⁶ V I

3. 3.

D: I vi V₆ i v₁ ii⁶ V i

4. 4.

F: I V₂ I₆ I B^b: V V₂ I₆ IV V I

UNIT VII, LESSON 2, PART III

1.

C: I V_{6/IV} IV V_{3/11} ii V7 I

UNIT VI, LESSON 4

1.

F: I IV⁶ a: VI iv ii⁷ V7 I

2.

g: I V i c: V⁷/₂ I⁶ ii⁶ I⁶ V I

3.

f: I V⁷/₃ I⁶ iv V⁷/₂ c: I⁶ ii⁶ I⁶ V7 I

4.

D: I V⁶ I I⁶ IV ei I iv I⁶ V7 I

UNIT VI, LESSON 5

1.

G: V I⁶ V⁷/₃ D: iii ii⁶ V I

2.

d: I V VI iv i B^b: vi IV V I

3.

E^b: I IV V V⁶ c: III iv⁶ I⁶ V⁷ I

4.

c#: I iv⁶ I V⁶ V⁶ V I iv⁶ E: ii⁶ V I

UNIT VII, LESSON 3, PART III

1.

B^b: I IV V V⁶/vi vi V⁶/V V

UNIT VII, LESSON 1, PART III

1.

d: i V⁷/₂ V⁶ V⁷ I ii⁶ V

2.

A: I I⁶ ii⁶ V⁶/V V V⁶ I

UNIT VII, LESSON 4, PART II

1.

f#: I vii⁶/₅ I⁶ V⁶/iv iv V⁶/V I⁶ V⁷/₄ I

2.

B^b: V I I⁶ IV V⁶/V I⁶ V7 I

UNIT VII, LESSON 8

I, 1

D: I 07 ii ii⁶ V⁶/V V I

I, 2

a: I V⁷/vi VI 07 I⁶ V7 I

II, 1

F: I vi IV ^b7 V 07 vi IV I

II, 2

b: I V⁷/iv iv⁶ 07 I⁶ V⁷/₂ I⁶ iv⁶ V

II, 3

E^b: I V⁷/₃ I⁶ V⁶/IV IV 07 ii V⁶ I

UNIT VII, LESSON 5, PART II

1.
 Bb: V I I6 V V₅/vi vi IV I

2.
 f: i V7/iv iv6 V₃/V i₄ V7 i

UNIT VII, LESSON 7, PART II

1.
 Bb: I iii V₅/IV IV #7 V I

2.
 d: I III V₂/VI VI6 V/iv iv V7 i

UNIT VII, LESSON 9

I, 1.
 G: I (07) (v1) V₃/IV IV V₇/4 I

I, 2.
 a: i V7/III III (i106) (07) V7 i

II, 1.
 F: I V₂/V V₅ I vi 07 ii6 V I

II, 2.
 e: V I6 ii[#]7 vii07 V₅ i V₂/iv iv6 iv V

II, 3.
 C: I vii06 V₅/IV IV IV6 V₂/11 ii6 I₄ V7 I

UNIT VIII, LESSON 1, PART III

D: I V₂ I6 ii[#]6/5 I₄ V7 I

UNIT VIII, LESSON 2, PART III

G: I III iv ii[#]6/5 I₄ V7 I

UNIT VIII, LESSON 4, PART II

1.
 A: I V6 I V7 VI ii[#]6/5 V

2.
 D: I V₅ I V₂/iv iv6 ii[#]6/3 V

UNIT VIII, LESSON 3

I, 1.
 Bb: I IV (ii[#]6/3) V7 VI iv I

I, 2.
 D: I IV₆ V₅ V i (iv6) V

II, 1.
 C: I V₆ I vi iv V7 I

II, 2.
 F: I I6 IV V VI III iv V7 I

II, 3.
 A: vii05 I V7 VI iv6 iv ii[#]6/5 I₄ V7 I

UNIT VIII, LESSON 6

I, 1

 C: I v11^o₅ I6 (V7/iv) (iv) (V^o₅/V) V

I, 2

 A: I (iv^o₄) (V7/vi) (vi) (IV7) V

II, 1

 E^b: I I6 ii^o₅ V VI 07 I^o₄ V I

II, 2

 F: I V^o₄ I6 V7/VI VI iv I^o₄ V^o₈ 7 I

II, 3

 G: I V V^o₅ i 07 iv6 ii^o₅ I^o₄ V I

UNIT VIII, LESSON 8

I, 1

 G: I (iv^o₄) i6 (vi) ii^o₅ V^o₈ 7 I

I, 2

 E: I (V^o₄/iv) (iv6) ii^o₅ V^o₅/V V^o₈ 7 I

II, 1

 A: I V^o₂ I6 ii^o₅ V 07 vi IV7 V

II, 2

 F: I 07 ii V^o₅/III III VI ii^o₃ V I

II, 3

 E^b: V^o₈ 7 I6 V/vi vi6 07 ii ii^o₇ vii^o₇ V I

UNIT VIII, LESSON 7

I, 1

 G: I (v11^o₇) (i) (III) (iv) V7 I

I, 2

 C: I ii^o₄ V^o₅ I (iv) V^o₅/V V

II, 1

 A: I IV6 iv6 I^o₄ 07 I^o₄ V7 I

II, 2

 E: I V vi V^o₃/V V V^o₅ I ii^o₅ V

II, 3

 D: I V7/i1 ii6 V^o₂ I6 iv I^o₄ V7 I

UNIT IX, LESSON 1, PART III

1.

 d: i V^o₅ i VI Gr^o₅ V4 3 i

2.

 A: I I6 IV ii^o₃ Fr^o₃ V I

UNIT IX, LESSON 3, PART II

1.

 D: I vi IV N6 I^o₄ V7 I

g: i V^o₄ i6 V7 VI iv6 Fr^o₃ V i

UNIT IX, LESSON 2, PART III

G: I I₂⁴ IV6 Gr₅⁶ I₄⁶ V7 v1 N6 V I

UNIT IX, LESSON 5

1. G: I V₃⁴/vi v1 Fr₃⁶ I₄⁶ V I

2. c: I V₅²/iv iv N6 I₄⁶ IV I

3. G: I V₂⁴/iv iv6 V₅²/V I₄⁶ V7 v1 Fr₃⁶ v4 3 I

4. f: I III VI Gr₅⁶ I₄⁶ V₅² I N6 I₄⁶ V7 I

UNIT IX, LESSON 7

1. B^b: I v1 g: VI Gr₅⁶ I₄⁶ V7 I

2. a: I V₅²/VI VI N6 I₄⁶ V7 I

3. D: I v1 Gr₅⁶ V V₂⁴ I6 N6 I₄⁶ V7 I

4. E^b: I I6 I106 V I V₅²/11 11 f: I VI Fr₃⁶ V7 I

UNIT IX, LESSON 4, PART II

1. c: I V₂⁴ I6 N6 I₄⁶ IV I

2. d: I I₂⁴ VI7 Fr₃⁶ I6 iv V7 I

UNIT IX, LESSON 6

1. e: I V V₃⁴/III III VI Gr₅⁶ V

2. D: I v1 V₃⁴/IV IV N6 V⁸ 7 I

3. F: I iv N6 ^o7 V Fr₃⁶ I₄⁶ V7 I

4. d: I I₂⁴ VI Gr₅⁶ V V₂⁴ I6 iv N6 V I

UNIT IX, LESSON 8

1. d: I V₅² V₂⁴/iv iv6 iv N6 I₄⁶ V

2. B^b: I V₃⁴ I6 d: VI Fr₃⁶ v4 3 I

3. f: I VI iv N6 I₄⁶ V7 I Fr₃⁶ V

4. G: I IV7 I16 V D: IV V₃⁴ I Gr₅⁶ I₄⁶ V7 I

Handwritten text in the top left section of the page.

Handwritten text in the top right section of the page.

Handwritten text in the second row on the left side.

Handwritten text in the second row on the right side.

Handwritten text in the third row on the left side.

Handwritten text in the third row on the right side.

Handwritten text in the fourth row on the left side.

Handwritten text in the fourth row on the right side.

Handwritten text in the fifth row on the left side.

Handwritten text in the fifth row on the right side.

Handwritten text in the sixth row on the left side.

Handwritten text in the sixth row on the right side.

Handwritten text in the seventh row on the left side.

Handwritten text in the seventh row on the right side.

Handwritten text in the eighth row on the left side.

Handwritten text in the eighth row on the right side.

Handwritten text in the bottom left section of the page.

Handwritten text in the bottom right section of the page.